

**Abstract** We survey the published work of Harry Kesten in probability theory, with emphasis on his contributions to random walks, branching processes, percolation, and related topics. A complete bibliography is included of his publications.

**Keywords** Probability, random walk, branching process, random matrix, diffusion limited aggregation, percolation.

**Mathematics Subject Classification (2010)** 60-03, 60G50, 60J80, 60B20, 60K35, 82B20.

# Harry Kesten’s work in probability theory

Geoffrey R. Grimmett

*In memory of Harry Kesten, inspiring colleague, valued friend*

Submitted 20 April 2020, revised 26 October 2020

## Contents

1 Overview	2
2 Highlights of Harry’s research	4
3 Random walk	8
4 Products of random matrices	17
5 Self-avoiding walks	17
6 Branching processes	19
7 Percolation theory	20
8 Further work	31
Acknowledgements	33
References	34
Publications of Harry Kesten	40

## 1 Overview

Harry Kesten was a prominent mathematician and personality in a golden period of probability theory from 1956 to 2018. At the time of Harry’s move from the Netherlands to the USA in 1956, as a graduate student aged 24, much of the foundational infrastructure of probability was in place. The central characters of probability had long been identified (including random walk, Brownian motion, the branching process, and the Poisson process), and connections had been made and developed between ‘pure theory’ and cognate areas ranging from physics to finance. In the half-century or so since 1956, a coordinated and refined theory has been developed, and probability has been recognised as a crossroads discipline in mathematical science. Few mathematicians have contributed as much during this period as Harry Kesten.

Following a turbulent childhood (see [67]), Harry studied mathematics with David van Dantzig and Jan Hemelrijk in Amsterdam, where in 1955 he attended

---

Statistical Laboratory, Centre for Mathematical Sciences, Cambridge University, Wilberforce Road, Cambridge CB3 0WB, UK; School of Mathematics & Statistics, The University of Melbourne, Australia; Heilbronn Institute for Mathematical Research, Bristol University, UK. E-mail: grg@statslab.cam.ac.uk

a lecture by Mark Kac entitled “Some probabilistic aspects of potential theory”. This encounter appears to have had a decisive effect, in that Harry moved in 1956 to Cornell University to work with Kac. In due course, and together with his colleagues including his fellow emigrés Frank Spitzer and later Eugene Dynkin, Harry's work and influence supported the Cornell Mathematics Department as a leading institution worldwide in probability and beyond. Many visitors were attracted to this extraordinary academic niche in upstate New York, where they were received with warmth, and invited to participate in a variety of mathematical and physical activities.

Mark Kac had a lasting influence on Harry, and it was apposite that Harry should write an appreciation of the former's work on his death in 1984 (as he did for Spitzer in 1993 (see [K92, K129]<sup>1</sup>). Coincidentally, Mark Kac's first publication was dated the year of Harry's birth, 1931, and his last appeared shortly after one of Harry's best known results, namely his proof in 1980 that the critical probability of bond percolation on  $\mathbb{Z}^2$  equals  $\frac{1}{2}$ .

A number of further individuals influenced Harry's work, including particularly his friend and colleague Frank Spitzer, and more distantly John Hammersley, whose earlier papers on self-avoiding walks, percolation, first-passage percolation, and subadditivity are frequently reflected in Harry's own papers. Harry had in common with Hammersley a preference for what the latter termed “implicated” mathematics over the “contemplative” sort, and the solving of problems featured strongly in both their scientific lives (see [71, p. 1132]).

While Harry's publications lie largely within probability theory, his broader expertise extended into neighbouring areas of mathematics, including topics in algebra, analysis, geometry, and statistical physics. Already by 1960 he had substantial results for random walks on groups, products of random matrices, and aspects of what we call here ‘probabilistic Diophantine approximation’. These interests expanded over the next decade to include random walk and potential theory, stable and Lévy processes, self-avoiding walks, and branching processes, and in the 1980s to random walk in random environments, and random recurrence relations.

Harry's career was punctuated in 1980 by his proof that  $p_c = \frac{1}{2}$  for bond percolation on the square lattice. Before then, he worked largely on random walks and branching processes, and afterwards his interests shifted towards mathematical processes inspired by physics. Common themes and strands are discernible. For example, subadditivity crops up first in his 1960 paper on random matrices, and much later in first-passage percolation and random flows, with self-avoiding walks in between. Local surgery and exponential estimates are techniques which he used in a number of contexts.

He had a taste for hard problems, and he developed a fearsome reputation as a problem-solver. He would plough on beyond the capacities of others when confronted with technical difficulties or complications, and it could be years before the community caught up with him. A number of his major works have later been overtaken by ‘neater’ proofs of others, though his original methods, being more ‘hands on’, can prove more robust as the assumptions are perturbed.

---

<sup>1</sup> Citations beginning with the letter K refer to the list of Harry's publications at the end of this article.

Certain decisions had to be confronted in writing this summary of Harry's work. On the one hand, a chronological account allows the reader to witness the development of Harry's interests, and more generally the evolution of probability theory; on the other hand, many readers may find his work on physical systems more approachable than his somewhat more technical work on the mathematics of random walks and the like. The strategy adopted in the current article is to present the author's choice of highlights of Harry's research (in Section 2) followed by the fuller, more chronological survey of Sections 3–7.

The time-ordered framework of this article is subject to frequent local deviations. Thus, we begin in Section 3 with random walks in their various forms, followed by products of random matrices, self-avoiding walks, and branching processes; thence to classical and first-passage percolation, and the many related problems that attracted Harry. Certain later results are dovetailed into earlier sections, where they risk disturbing the chronological flow with brief reviews. Some important papers that do not fit easily into this programme are deferred to the final Section 8.

The author acknowledges the incompleteness of this personal perspective, and he pleads limited knowledge and lack of space. He apologises to those whose relevant work is not listed. Special mention is made of Rick Durrett's excellent article [50] written for the 1999 Festschrift for Harry (see [19]), which has been a support in the writing of the current work.

Not quite all of Harry's work is publically available. In addition to his two as yet unpublished articles on [arxiv.org](https://arxiv.org), which are included in the appended bibliography, there is a handful of papers whose lengths he considered to be disproportionate to their novelty. He kept these in his bottom drawer, and we have abided by his judgement.

Mention is made of some of Harry's professional activities beyond his own research. In addition to serving on the Editorial Boards of a number of journals (including the current journal, then known as ZfW), he was the Managing Editor of *The Annals of Probability* from 1982–1984, in fact the fourth such Editor since the journal's inception in 1972. He served as an Elected Member of the Council of the Institute for Mathematical Statistics from 1988–1991.

Harry Kesten's impact on mathematics was broader than his decidedly outstanding written output. He was in addition a very popular and respected figure, and an excellent collaborator and correspondent. As a role model and friend for younger colleagues, his positive influence on the intellectual and personal values of the probability community is amongst his greatest legacies.

## 2 Highlights of Harry's research

This section contains very brief accounts of some of the highlights of Harry's work, taken out of chronological order and context. Readers may follow the links to the fuller accounts presented in Sections 3–8.

## 2.1 Percolation

### *Critical probability of bond percolation on $\mathbb{Z}^2$* (§7)

Harry's proof that  $p_c = \frac{1}{2}$  for bond percolation on  $\mathbb{Z}^2$  was a watershed for the subject. It solved a notorious old problem and introduced a number of new ideas. In so doing, it illuminated percolation theory as a key process of probability, and it contributed to a development of disordered systems that is very active at the time of writing.

### *The van den Berg–Kesten inequality* (§7.2)

Correlation inequalities are key to the study of interacting systems. The so-called FKG inequality has been especially important, and it asserts that increasing events are positively correlated (for suitable probability measures). *Negative correlation* is a more elusive concept than its positive sibling. Probably the most important negative correlation inequality for product measures is that of van den Berg and Kesten from 1985. They introduced the notable concept of the 'disjoint occurrence' of events, and they proved the associated inequality. It has been very useful since.

### *Uniqueness of the infinite cluster* (§7.3)

How many infinite open clusters does a supercritical percolation process on  $\mathbb{Z}^d$  possess? Aizenman, Kesten, and Newman showed the answer to be a.s. one. They introduced methods that have since been useful elsewhere, and they opened the door to a series of important papers by others on disordered systems on graphs of a variety of types. It turns out that the answer is always one for amenable graphs, whereas the picture is more diverse for non-amenable graphs.

### *Incipience and subdiffusivity* (§7.4)

Critical percolation is believed (and in most dimensions known) to have only finite open clusters. From physics came the idea of studying the infinite percolation cluster that critical percolation is 'trying to form'. Harry made sense of this notion in two dimensions with his proof of the existence of a probability measure defined as the limit of the (critical) product measure conditioned on the origin lying in an increasingly large cluster. He called this limit the *incipient percolation cluster*  $\tilde{C}$ .

He was able to show a fractal-like structure of  $\tilde{C}$ , in part by utilising de Gennes' proposal of setting in motion a random walker. Whereas the natural normalization of a random walk  $(X_n)$  on  $\mathbb{Z}^2$  is  $\sqrt{n}$ , it turns out that, for a walk  $(X_n)$  on  $\tilde{C}$ , there exists  $\epsilon > 0$  such that  $n^{-\frac{1}{2}+\epsilon} X_n \rightarrow 0$ . This 'subdiffusivity' occurs because the walk spends a lot of its time in blank alleys of  $\tilde{C}$ .

### *Scaling relations in two dimensions* (§7.6)

There is a full physical picture of the percolation phase transition in two dimensions. A great deal is 'known' but, even today, relatively little has been proved (with the exception of site percolation on the triangular lattice). It is expected

that functions have power-law singularities at and near the critical point  $p_c$ , and that their ‘critical exponents’ satisfy the so-called scaling relations.

A major step forward was taken by Harry in 1987 towards an understanding of such exponents and relations. Under the assumption of the existence of two exponents, he proved the existence of five more, and the validity of the associated scaling relations. On the way to this, he studied the so-called ‘arm events’ that have been so important in more recent work. This article has had a major impact on the rigorous theory of the percolation phase transition in two dimensions.

### *Random flows (§7.7)*

‘First-passage percolation’ is the study of the rate of spread of material through a random medium. Harry made a systematic study of the related problem of the maximal flow through a medium subject to random edge-capacities. Careful control of dual surfaces is required in three or more dimensions.

## 2.2 Random walks

### *Random walks on groups (§3.2)*

In his distinctively innovative PhD thesis from 1958, Harry introduced the theory of random walks on countable discrete groups. He proved that the probability of return to the starting point after  $2n$  steps behaves in the manner of  $\lambda^{2n}$  where  $\lambda$  is the spectral radius. Moreover,  $\lambda = 1$  if and only if the group is amenable. This condition for amenability has become one of the tools of geometric group theory, and the field that he initiated remains active today.

### *Random walk in random environment (§3.5)*

Undergraduates learn about random walks on  $\mathbb{Z}$  that, when at  $x \in \mathbb{Z}$ , jump one step to the right (respectively, left) with probability  $\alpha$  (respectively,  $\beta = 1 - \alpha$ ). Life becomes much more complicated if the value of  $\alpha$  at the point  $x$  is a random variable  $\alpha_x$ . It turns out that the long-term behaviour of the walker is heavily influenced by domains  $D$  of  $\mathbb{Z}$  where the  $(\alpha_x : x \in D)$  conspire to slow it down. With Kozlov and Spitzer, Harry proved a very precise result about the walker’s position, in terms of a stable law of index  $\kappa$ , where  $\kappa$  is given by  $\mathbb{E}((\beta_0/\alpha_0)^\kappa) = 1$ .

### *Diffusion limited aggregation (§3.6)*

This famous model for aggregation has resisted many attempts to build rigorous theory. Drifting particles aggregate at the first point of a composite that they hit. Simulations support the belief that growth is dendritic and fractal. In 1987 Harry proved one of the few rigorous results, namely that (in two dimensions) the radius of the composite grows no faster than  $n^{\frac{2}{3}}$ .

### 2.3 Branching processes and $L \log L$ (§6)

Harry liked necessary and sufficient conditions, as exemplified in his most prominent works on branching processes. Consider a supercritical branching process  $(Z_n)$  with one progenitor and mean family-size  $\mu \geq 1$ . The limit  $W = \lim_{n \rightarrow \infty} Z_n / \mu^n$  exists, by martingale convergence. With Stigum, Harry found the necessary and sufficient condition for  $\mathbb{E}(W) = 1$ , namely  $\mathbb{E}(Z_1 \log^+ Z_1) < \infty$ . Around the same time, with Ney and Spitzer, he established necessary and sufficient conditions for the Yaglom and Kolmogorov laws for critical branching processes.

### 2.4 Products of random matrices (and scalars) (§4)

In early work with Furstenberg from 1960, Harry investigated the limiting behaviour of the partial products  $Y_n$  of a stationary, ergodic sequence  $(M_n)$  of random matrices. They proved in particular that the limit of  $n^{-1} \log \|Y_n\|$  exists, and furthermore that a central limit theorem holds under suitable assumptions.

Harry studied later the stochastic recurrence equation  $Y_n = M_n Y_{n-1} + Q_n$ , as well as the apparently simpler case of a *scalar* random variable  $Y$  such that  $Y$  and  $MY + Q$  have the same distributions. His proof that  $Y$  is generically heavy-tailed has had enormous influence in numerous areas of applied probability, statistics, and finance.

### 2.5 Self-avoiding walks (§5)

What can be said about the number  $\chi_n$  of  $n$ -step self-avoiding walks (SAWs) on a lattice  $\mathcal{L}$ , with a given starting point? The combinatorics of SAWs are especially complicated, and asymptotics for  $\chi_n$  are challenging to derive. It is classical that  $\chi_n^{1/n} \rightarrow \kappa$  for some *connective constant*  $\kappa$  associated with the lattice  $\mathcal{L}$ . When  $\mathcal{L} = \mathbb{Z}^d$ , Harry proved the more refined ratio limit theorem  $\chi_{n+2}/\chi_n \rightarrow \kappa^2$ , and in so doing introduced a ‘pattern theorem’ which has had lasting impact in this challenging and visible field.

### 2.6 Polar points of Lévy processes (§3.3)

Let  $(X_t)$  be a  $d$ -dimensional Lévy process, and define the hitting probability  $h(r) = \mathbb{P}(X_t = r \text{ for some } t > 0)$  for  $r \in \mathbb{R}^d$ . The point  $r$  is called *polar* if  $h(r) = 0$ . The identification of the polar points became a prominent problem in the 1960s. Harry identified the set of polar points in one dimension, and proved (subject to reasonable conditions) that polarity is the norm in two or more dimensions.

### 2.7 Probabilistic Diophantine approximation (§8.1)

Perhaps inspired by an early collaboration with Mark Kac, Harry wrote several papers around 1960 on aspects of Diophantine approximation, using frequently the language and methods of probability theory. His best known work is a paper

which set the scene for the more recent theory of bounded remainder sets. Let  $\{x\} = x - \lfloor x \rfloor$  denote the fractional part of the real number  $x$ . With  $0 \leq a < b \leq 1$  and  $b - a < 1$ , let  $S_n(x)$  be the number of integers  $k \in \{1, 2, \dots, n\}$  such that  $\{kx\} \in [a, b)$ . In proving that  $S_n(x) - n(b - a)$  is bounded in  $n$  if and only if  $b - a = \{jx\}$  for some integer  $j$ , Harry answered a question of Erdős and Szűsz.

### 3 Random walk

#### 3.1 Random walk

The purist might view probability theory as finite measure theory plus conditional expectation. The concept of ‘independence’ is fundamental to the theory, as is its negation ‘dependence’. As Kac wrote in [84]: “This notion [statistical independence] originated in probability theory and for a long time was handled with vagueness which bred suspicion as to its being a bona fide mathematical notion.” Independence was considered historically as a basis for the multiplication of probabilities, and it seems to have been Steinhaus (student of Hilbert, advisor to Banach and Kac) who introduced the now familiar definition of independence for a countable family of random variables (as reported by Kac [83]; see also [K92, p. 1104]).

Random walk is the theory of the partial sums of a sequence of independent, identically distributed (iid) random variables. Such partial sums are viewed as a process, suitably indexed, and the emphasis is generally upon the geometrical aspects of this process. Random walk is arguably the most fundamental process of probability. Recent books on the topic include [93, 94].

#### 3.2 Random walk on groups

It is not surprising, given the circumstances of his arrival at Cornell, that Harry’s PhD thesis was concerned with random walk, albeit in the novel context of groups. In his 35 page thesis of 1958 ([K7], published as [K11]), he initiated the theory of random walks on groups, a healthy topic even 60 years later.

The usual random walk takes jumps around the abelian groups  $\mathbb{Z}^d$  or  $\mathbb{R}^d$  under addition. More generally, let  $G$  be a countable (additive) group, and let  $A = \{a_1, a_2, \dots\}$  be a generating set for  $G$  and  $P = (p_1, p_2, \dots)$  a strictly positive vector with sum  $\frac{1}{2}$ . The triple  $(G, A, P)$  gives rise to a random walk  $X = (X_n : n \geq 0)$  on  $G$  that, when at  $g \in G$ , moves at the next step to  $g \pm a_i$  with probability  $p_i$  (for each  $i$ ). Harry investigated the relationship between the spectrum of the transition matrix  $M$  (considered as an operator on  $l^2(G)$ ) and the properties of the group  $G$ . The *spectral radius*  $\lambda(G, A, P)$  of  $M$  is the supremum of  $|\lambda|$  taken over all eigenvalues  $\lambda$  of  $M$ . Write  $0$  for the zero element of  $G$ , and  $\mathbb{P}_x$  for the law of  $X$  given  $X_0 = x$ .

#### Theorem 3.1 [K11]

- (a) *The spectral radius  $\lambda(G, A, P)$  equals the maximal eigenvalue of  $M$ .*
- (b) *We have that  $\lambda(G, A, P) = \lim_{n \rightarrow \infty} \mathbb{P}_0(X_{2n} = 0)^{1/(2n)}$ .*



- (c) Whether or not  $\lambda(G, A, P) = 1$  depends only on the structure of the group  $G$ , in the following sense. We have that  $\lambda(G, A, P) = 1$  if and only if  $\lambda(G, B, Q) = 1$  for some generating set  $B$  and strictly positive  $Q$ .

Write  $\lambda(G) = 1$  when the common value of part (c) satisfies  $\lambda(G, A, P) = 1$ . The following criterion for amenability is a fundamental result in geometric group theory.

**Theorem 3.2** [K9] *The group  $G$  is amenable if and only if  $\lambda(G) = 1$ .*

In the collaboration that followed, Kesten and Spitzer [K31] asked about potential kernels for random walks on countably infinite abelian groups. They presented a criterion for recurrence, and they established a potential theory. In his Berkeley symposium paper [K37], Harry collected together a number of related open problems, including what came to be known as 'Kesten's conjecture': the only recurrent groups are the finite extensions of  $\{0\}$ ,  $\mathbb{Z}$ , and  $\mathbb{Z}^2$ . This prominent conjecture was finally verified in its generality in 1986 by Varopoulos [118] (see [72]).

Random walks on groups have attracted much attention in recent years; see [123]. In the case of finite groups, it is appropriate to mention Saloff-Coste's chapter [107], included in the collection [K177] edited by Harry.

### 3.3 General theory of random walk

The decade of the 1960s was a rich period for the theory of random walk, with the first edition of Spitzer's important book [113] published in 1964. Harry wrote a number of significant articles around this time, of which four were concerned with ratio limit theorems.

**Theorem 3.3** *Let  $X$  be an irreducible random walk on  $\mathbb{Z}^d$  where  $d \geq 1$ . Assume  $X_0 = 0$ , and let  $T$  be the time of the first return by  $X$  to 0.*

- (a) [K27] *The probabilities  $r_n = \mathbb{P}_0(T > n)$  satisfy  $r_{n+1}/r_n \rightarrow 1$  as  $n \rightarrow \infty$ .*  
 (b) [K22] *Furthermore, the limit*

$$\lim_{n \rightarrow \infty} \frac{\mathbb{P}_x(T > n)}{\mathbb{P}_0(T > n)} = \delta_{0,x} + a(x)$$

*exists for  $x \in \mathbb{Z}^d$ , where  $a(x)$  is the potential kernel*

$$a(x) = \sum_{n=0}^{\infty} [\mathbb{P}_0(X_n = 0) - \mathbb{P}_x(X_n = 0)] < \infty.$$

Part (a) is a key part of the proof of part (b), due to Kesten, Ornstein, and Spitzer. The main purpose of [K27] was to extend part (b) to the number of visits of  $X$  to an arbitrary finite subset  $\Omega$  of  $\mathbb{Z}^d$ , that is, to exhibit an expression for the limit of the ratio  $\mathbb{P}_x(n, r, \Omega)/\mathbb{P}_0(T > n)$  as  $n \rightarrow \infty$ , where the numerator is the probability that  $X$  makes exactly  $r$  visits to  $\Omega$  up to time  $n$ . This is a ratio of sums, and one may in principle obtain more refined results by examining the ratios of certain individual terms in these sums. This last project was pursued

by Harry alone in [K26]. It was left there as a conjecture to show that  $f_n^{(r)} := \mathbb{P}_0(n, r, \{0\}) - \mathbb{P}_0(n-1, r, \{0\})$  satisfies

$$\lim_{n \rightarrow \infty} \frac{f_n^{(r)}}{f_n^{(1)}} = r, \quad r = 2, 3, \dots$$

the proof of which (for aperiodic, recurrent, symmetric chains) was delayed until [K46].

While at The Hebrew University in 1960, Harry began his work on  $\alpha$ -stable processes  $X$ , in an investigation of the intervals of time during which  $X_t > 0$ . He derived asymptotics for the number  $N(\epsilon)$  of such intervals with length greater than  $\epsilon$ , and observed that his answers for  $\alpha \neq 1$  coincided with results of Chung and Kac [33] on changes of sign in sums of iid variables with a stable distribution. This led to a correspondence with Chung and Kac about the validity of their claims when  $\alpha = 1$  (see [K92, p. 1119]). Harry wrote up his results in [K25].

In the two linked papers [K15, K16], Harry extended earlier results of Spitzer and Stone [114] concerning the mean number of visits by a random walk on  $\mathbb{Z}$  to a given state before exiting a given bounded interval. He was principally motivated to consider random walks with  $\alpha$ -stable jumps. This work led naturally to two subsequent papers, the first of which, [K30], answered a question of Erdős with an iterated logarithm law for the number of visits by a random walk to its most visited state. In the later paper [K39], Harry proved that, if the mean number of visits to a given interval  $I$  up to time  $n$  grows in the manner of  $n^{1-1/\alpha}$  with  $\alpha \in (1, 2]$ , then the jumps belong to the domain of attraction of a symmetric  $\alpha$ -stable law. This answered a question of Spitzer concerning a converse result of Darling and Kac [40].

Let  $X$  be a  $d$ -dimensional Lévy process, that is, a random process taking values in  $\mathbb{R}^d$  with stationary independent increments. Announced in [K40] and proved in his AMS Memoir [K42] are Harry's results on the question: when is it the case that the hitting probability  $h(r) = \mathbb{P}(X_t = r \text{ for some } t > 0)$  satisfies  $h(r) > 0$ ? He identified seven cases when  $d = 1$ , and included a criterion (see Theorem 3.4) for the statement  $h(r) = 0$  for all  $r \in \mathbb{R}$ , while warning the reader that "In most practical situations one will have a hard time applying the criterion . . .". The cases  $d \geq 2$  are more complicated still. His  $d = 1$  result was motivated by and answered a question of Chung on solutions to a certain convolution equation.

From the spread of results in his paper, we extract one in the following paraphrase. The point  $r \in \mathbb{R}^d$  is called *polar* if  $h(r) = 0$ , and we let  $\mathcal{P}$  denote the set of polar points.

**Theorem 3.4** [K42] *Let  $X$  be a one-dimensional Lévy process which is not a compound Poisson process. Then  $\mathcal{P} = \mathbb{R}$  if and only if the characteristic exponent  $\Psi$  of the process  $X$  satisfies*

$$\int_{-\infty}^{\infty} \Re \left( \frac{1}{1 + \Psi(u)} \right) du = \infty,$$

where  $\Re(z)$  denotes the real part of  $z$ .

Shortly after the publication of this paper, Bretagnolle "obtained very elegant and powerful probabilistic arguments and thereby obtain[ed] considerably simpler proofs of the [Harry's] results" (quotation from Harry's review of Bretagnolle's

paper [20]). Of the numerous modern accounts of Lévy processes, we mention the books [18, 45, 92].

Harry delivered the 1971 Rietz Lecture of the Institute of Mathematical Statistics. In the resulting article [K51], he surveyed three aspects of the theory of the sum  $S_n$  of  $n$  independent random variables  $X_i$ , namely, (i) spread of distributions and concentration functions, (ii) ratio limit theorems and potential kernels, (iii) the set of accumulation points of  $S_n/\gamma_n$  for suitable  $\gamma = (\gamma_n)$ , when the  $X_i$  are iid. His inclusion in the title of “without moment conditions” (and omission of “identically distributed”), is typical of his inveterate search for generality, but he resisted a temptation to move much beyond one dimension. Parts (i) and (ii) are important surveys of earlier distributional theory of Harry and others, including [K41] and the material on ratio limit theorems remarked above.

Part (iii) of [K51] is concerned with the ‘strong’ theory of  $S_n/\gamma_n$ . Let

$$A(S, \gamma) = \bigcap_{m=1}^{\infty} \overline{\{S_n/\gamma_n : n \geq m\}}.$$

For any given distribution function  $F$  of the  $X_i$ , there exists a deterministic closed subset  $B(F, \gamma)$  of the extended real line  $\overline{\mathbb{R}}$  such that  $A(S, \gamma) = B(F, \gamma)$  a.s. The strong law of large numbers and the law of the iterated logarithm may be viewed as determinations of  $B(F, \gamma)$  for  $\gamma_n = n$  and  $\gamma_n = \sqrt{2n \log \log n}$  under suitable conditions. Harry ended his paper with a very general law of the iterated logarithm for the sums of an iid sequence, subject to the necessary and sufficient condition that their common distribution  $F$  lies in the domain of partial attraction of the normal law.

**Theorem 3.5** [K43, K51]

- (a) If  $B(F, (n))$  contains two or more points, then it contains  $+\infty$  and  $-\infty$ .
- (b) For any closed subset  $B$  of  $\overline{\mathbb{R}}$  containing  $\{-\infty, +\infty\}$ , there exists  $F$  such that  $B(F, (n)) = B$ .

Harry asked about the set  $B(F, (n^\alpha))$ , and he returned to this question in joint work with Erickson. Let  $B_s(F, (n^\alpha))$  be the set of  $b \in \overline{\mathbb{R}}$  such that there exists a non-random sequence  $n_k$  satisfying  $S_{n_k}/n_k^\alpha \rightarrow b$  a.s. as  $k \rightarrow \infty$ . It is interesting to investigate the relationship between  $B(F, (n^\alpha))$  and its subset  $B_s(F, (n^\alpha))$  of ‘strong limits’.

**Theorem 3.6** [K53]

- (a) Let  $\alpha > \frac{1}{2}$ ,  $\alpha \neq 1$ , and suppose  $B_s(F, (n^\alpha)) \cap \mathbb{R} \neq \emptyset$ . Then  $B_s(F, (n^\alpha)) \cap \mathbb{R}$  equals one of  $(-\infty, 0]$ ,  $[0, \infty)$ ,  $\mathbb{R}$ , and each of these three possibilities can occur.
- (b) Let  $\alpha = 1$ . For any closed subset  $B$  of  $\overline{\mathbb{R}}$ , there exists  $F$  such that  $B_s(F, (n)) = B$ .

Harry later verified a conjecture of Erickson [54] that a general  $d$ -dimensional random walk diverges at least as fast as does a simple symmetric random walk.

**Theorem 3.7** [K64] Let  $(X_i)$  be iid  $\mathbb{Z}^d$ -valued random variables whose support is contained in no hyperplane, and let  $S_n = \sum_{i=1}^n X_i$ . Let  $\psi : [1, \infty) \rightarrow (0, \infty)$  be such that  $\psi(t)/t^{\frac{1}{2}} \rightarrow 0$  as  $t \rightarrow \infty$ , and let  $(S_n^*)$  be a simple symmetric random walk on  $\mathbb{Z}^d$ . If  $|S_n^*|/\psi(n) \rightarrow \infty$  a.s. as  $n \rightarrow \infty$ , then  $|S_n|/\psi(n) \rightarrow \infty$  a.s. as  $n \rightarrow \infty$ .

In joint work with Durrett and Lawler [K115, K123] published under the banner of gambling, Harry investigated the long-term behaviour of a walk  $(S_n)$  on  $\mathbb{Z}$  with independent steps  $(X_i)$ , each of which may have one of a given finite set  $\mathcal{D}$  of zero-mean distributions. In an answer to a question of Spătaru, they showed that any of the following may occur: (i)  $\mathbb{P}(S_n \rightarrow \infty) = 1$ , or (ii)  $\mathbb{P}(S_n \rightarrow -\infty) = 1$ , or (iii) there are transient oscillations between  $\pm\infty$ . Condition (i) is equivalent to  $\mathbb{P}(S_n > 0) \rightarrow 1$ , and similarly for (ii). Now suppose  $\mathcal{D} = \{F_1, F_2\}$  where  $F_i$  has infinite variance but finite  $q_i$ th moment, with  $q_i \in (1, 2)$ . When  $q_1 + q_2 > 3$ , we have simultaneously that  $\limsup_{n \rightarrow \infty} \mathbb{P}(S_n < 0) > 0$  and  $\limsup_{n \rightarrow \infty} \mathbb{P}(S_n > 0) > 0$ , whatever the choice of the distributions of the  $(X_i)$ .

### 3.4 Random walk after 1992

Following his solution in 1980 to the percolation problem on  $\mathbb{Z}^2$  (see Theorem 7.1), Harry's interests shifted towards percolation and related areas. He returned to more classical problems on a visit to Australia in 1990, and between 1992 and 2004 he published 10 papers with Ross Maller on random walks. This work is somewhat technical, and complete statements of their results (including the modes of convergence) are not included here.

Let  $(X_i)$  be an iid sequence with sums  $S_n = \sum_{i=1}^n X_i$ . For given  $n \geq 1$ , let  $X_{(1)} \geq X_{(2)} \geq \dots \geq X_{(n)}$  denote the (decreasing) order statistics of the subsequence  $(X_i : i = 1, 2, \dots, n)$ , and let  $X^{(1)}, X^{(2)}, \dots, X^{(n)}$  be the subsequence reordered in decreasing order of absolute values. The 'trimmed sums' are defined as

$${}^{(r)}S_n = S_n - X_{(1)} - \dots - X_{(r)}, \quad {}^{(r)}\bar{S}_n = S_n - X^{(1)} - \dots - X^{(r)},$$

for  $r = 0, 1, 2, \dots, n$ , and they express in two ways the degree of dominance of the overall sum  $S_n$  over the summands. Working with the trimmed sums for fixed  $r$  is termed 'light trimming'. The results of [K124] include necessary and sufficient conditions for the lightly trimmed sums to satisfy  ${}^{(r)}S_n/X_{(r)} \rightarrow \infty$  and  ${}^{(r)}\bar{S}_n/|X^{(r)}| \rightarrow \infty$  as  $n \rightarrow \infty$ . In [K150], Kesten and Maller studied the validity of the limits  $S_n \rightarrow \infty$  and  $S_n/n \rightarrow \infty$ , and obtained conditions under which  $\infty \in B_s(F, 1)$  and/or  $\infty \in B_s(F, n)$ , in the notation of Theorem 3.6. They turned in [K176] to the effect of trimming on a generalized law of the iterated logarithm.

In papers [K135, K140], Kesten and Maller established necessary and sufficient conditions for  ${}^{(r)}S_n/C_n \rightarrow \pm\infty$  and  ${}^{(r)}\bar{S}_n/C_n \rightarrow \pm\infty$  as  $n \rightarrow \infty$ , where the  $C_n$  are non-random. The results are of course related to Harry's earlier work on strong limits of the ratio  $S_n/\gamma_n$ ; see Theorems 3.5–3.6. They imply, for example, that  $\mathbb{P}(S_n > 0) \rightarrow 1$  if and only if  $S_n \rightarrow \infty$  in probability, a fact of interest to compulsive gamblers with deep pockets.

Moments of the first and last exit times of an interval  $(-\infty, x]$  are explored in [K147], and the orders of magnitude of such moments are established as  $x \rightarrow \infty$ . The so-called 'stability' of exit times from a strip or half-plane of  $\mathbb{R}^2$  is studied in [K158], with potential connections to sequential analysis.

In two linked articles [K154, K155], the authors investigated the ratio  $S_n/n^\kappa$  as  $n \rightarrow \infty$ . Suppose that  $\mathbb{P}(S_n \rightarrow \infty) = 1$ , and let  $\kappa \geq 0$ ,  $\kappa \neq 1$ , and when  $\kappa > 1$  assume also that  $\mathbb{E}(|X_1|^{1/\kappa}) = \infty$ . Then the probability that  $S$  crosses the curve  $y = ax^\kappa$  before it crosses  $y = -ax^\kappa$  tends to 1 as  $a \rightarrow \infty$ . This intuitively clear

statement is not simple to prove, and indeed it is false when  $\kappa = 1$ . These results are connected in the second paper to the almost-sure limits  $\limsup_{n \rightarrow \infty} S_n/n^\kappa = \infty$  and  $\limsup_{n \rightarrow \infty} |S_n|/n^\kappa = \infty$ , for which necessary and sufficient conditions are given.

The *range*  $R_n$  of a random walk is the number of distinct points visited up to time  $n$ . Hamana and Kesten [K166, K169] proved a large-deviation principle for the range of a random walk on  $\mathbb{Z}^d$  with  $d \geq 1$ . The subadditivity of the sequence  $(R_n)$  is useful, and for once it turns out that the proof is hardest when  $d = 1$ . Certain results and conjectures for the range of random walk on a Cayley graph are presented in [K181].

### 3.5 Random walk in random environment

Random walks commonly live on either  $\mathbb{Z}$  (or  $\mathbb{Z}^d$ ), or more generally on  $\mathbb{R}^d$  for some  $d \geq 1$ . Groups provide a more general setting as in Section 3.2, and lately there has been great interest in random walks on general connected graphs. In all such settings, the underlying graph  $G$  is fixed, the randomness is associated with the walk only, and the ensuing process constitutes a Markov chain. The situation is much more complex if the environment is random also. In such a case, the position of the walker is no longer a Markov chain, and there are generally sub-domains of the environment where the walk moves anomalously. Such a process is termed 'random walk in random environment' (RWRE).

On the one-dimensional line  $\mathbb{Z}$ , simple RWRE amounts to: (i) sampling random variables for each site, that prescribe the transition probabilities (left or right?) when the walker reaches the site, and (ii) performing a random walk (or more precisely a Markov chain) with those transition probabilities. RWRE is a Markov chain *given the environment* of transition probabilities, but it is not itself Markovian because, as the walker moves, it accrues information about the random environment.

Let  $A = \{\alpha_x : x = \dots, -1, 0, 1, \dots\}$  be iid random variables taking values in  $[0, 1]$ , and let  $\beta_x = 1 - \alpha_x$ . Conditional on  $A$ , let  $X = (X_n)$  be a random walk on  $\mathbb{Z}$  which, when at position  $x$ , moves one step rightwards (respectively, leftwards) with probability  $\alpha_x$  (respectively,  $\beta_x$ ).

Let  $\rho = \beta_0/\alpha_0$ . Suppose that there exists  $\kappa \in (0, \infty)$  such that

$$\mathbb{E} \log \rho < 0, \quad \mathbb{E}(\rho^\kappa) = 1, \quad \mathbb{E}(\rho^\kappa \log^+ \rho) < \infty,$$

and in addition  $\log \rho$  is non-arithmetic. The following, amongst other things, was proved by Kesten, Kozlov, and Spitzer in 1975.

**Theorem 3.8** [K56] *There exist constants  $A_\kappa, B_i > 0$ , and stable laws  $L_\kappa$  with index  $\kappa$ , such that the following hold as  $n \rightarrow \infty$ , for all appropriate  $x \in \mathbb{R}$ .*

- (a) If  $\kappa < 1$ ,  $\mathbb{P}(X_n \leq xn^\kappa) \rightarrow 1 - L_\kappa(x^{-1/\kappa})$ .
- (b) If  $\kappa = 1$ , for suitable  $\delta_n \sim n/(A_1 \log n)$ ,

$$\mathbb{P}(X_n - \delta_n \leq xn/(\log n)^2) \rightarrow 1 - L_1(-xA_1^2).$$

- (c) If  $1 < \kappa < 2$ ,

$$\mathbb{P}(X_n - (n/A_\kappa) \leq xn^{1/\kappa}) \rightarrow 1 - L_\kappa(-xA_\kappa^{1+1/\kappa}).$$

(d) If  $\kappa = 2$ ,

$$\mathbb{P}(X_n - (n/A_2) \leq x(n \log n)^{\frac{1}{2}} B_1 A_2^{-3/2}) \rightarrow \Phi(x).$$

(e) If  $\kappa > 2$ ,

$$\mathbb{P}(X_n - (n/B_3) \leq x n^{\frac{1}{2}} B_2 B_3^{-3/2}) \rightarrow \Phi(x).$$

Here,  $L_\kappa$  is concentrated on  $[0, \infty)$  if  $\kappa < 1$ , and has mean zero when  $\kappa > 1$ . The standard normal distribution function is denoted  $\Phi$ .

In particular, when  $\kappa < 1$ ,  $X_n$  has order  $n^\kappa$ . The complexities of the main theorem of [K56] are reproduced above in illustration of Harry's determination and ability to get right to the heart of a problem.

In the critical (recurrent) case, when  $\rho$  is bounded away from 0 and 1, and in addition satisfies

$$\mathbb{E} \log \rho = 0, \quad \sigma^2 := \mathbb{E}[(\log \rho)^2] \in (0, \infty),$$

Sinai [111] showed that  $\sigma^2 X_n / (\log n)^2 \Rightarrow L$  under the annealed measure  $\mathbb{P}$ , for some functional  $L$  of the standard Wiener process. Harry was able to calculate the density function of  $L$  (see also [61]).

**Theorem 3.9** [K93] *The random variable  $L$  has density function*

$$\frac{d}{dx} \mathbb{P}(L \leq x) = \frac{2}{\pi} \sum_{k=0}^{\infty} \frac{(-1)^k}{2k+1} \exp \left\{ -\frac{(2k+1)^2 \pi^2}{8} |x| \right\}, \quad x \in \mathbb{R}.$$

Harry returned to this RWRE in [K62], showing, subject to the condition  $\mathbb{E} \rho < 1$ , that the environment seen from the position of the walker has a limit distribution. Partial results when  $\mathbb{E} \rho = 1$  were stated also, with proofs "available from the author".

The above may be viewed as early contributions to the theory of RWRE, and to the related area of homogenization of differential operators with random coefficients. RWRE in higher dimensions requires different techniques, and major progress has been made by Bricmont and Kupiainen [21] and others (see also the references in Sznitman's paper [116]).

There are a number of variants of the RWRE problem. One such variant arises when the walk lives on a random graph such as a tree or part of a lattice, and Harry's work in these settings is summarised in Theorems 6.3 and 7.6–7.7. In other systems, the environment evolves in time in a manner that depends on the trajectory of the random walk. In the edge-reinforced random walk model, each edge is traversed with a probability depending on its weight, and its weight increases as it is traversed. With Durrett and Limic [K168], Harry showed that 'once-reinforced' walk (ORRW) of [41] on a tree is transient, and the distance of the walker from its starting point grows linearly with time. The ORRW model has attracted attention since, and the reader is referred to [34] for recent results.

Finally, den Hollander, Kesten, and Sidoravicius [K192] studied a two-type particle system on  $\mathbb{Z}^d$  in which the jump-distribution of a type-2 particle depends on whether or not there is type-1 particle present.

Whereas the above is set in *discrete* space–time, Harry's two papers [K68, K75] with Papanicolaou from 1979/1980 are directed at diffusion in a *continuous* random environment. In a model for turbulent diffusion, they considered the stochastic

differential equation  $\dot{x}(t) = v + \epsilon F(x(t))$  where  $v \neq 0$  is a fixed vector and  $F$  is a zero-mean stationary process satisfying a smoothness condition. Their main result is that diffusivity holds in the limit as  $\epsilon \downarrow 0$ . Stochastic acceleration, and the equation  $\ddot{x}(t) = \epsilon F(x, \dot{x})$  in  $d \geq 3$  dimensions, is the topic of the second paper, where they conclude that  $x$  converges to a diffusion process as  $\epsilon \downarrow 0$ .

### 3.6 Diffusion limited aggregation

Diffusion limited aggregation (DLA) is a stochastic model believed to exhibit dendritic growth and power-law correlations, which was introduced in finite volumes by Witten and Sander [122] (see Figure 3.1). We describe next Harry's results for a DLA model for a growing cluster on the lattice  $\mathbb{Z}^d$  with  $d \geq 2$ .

Let  $A_0$  be the origin of  $\mathbb{Z}^d$ . The intuition of growth is as follows. Conditional on the set  $A_n$ , the set  $A_{n+1}$  is obtained by starting a random walk 'at infinity' and stopping it when it reaches a point that is adjacent to  $A_n$ , and then adding that point to the set  $A_n$ . The concept of 'release at infinity' may be interpreted as starting at a point  $x$  and then letting  $|x| \rightarrow \infty$ . When  $d = 2$ , this random walk hits  $A_n$  with probability 1, whereas when  $d \geq 3$  the limit probability of hitting  $A_n$  is 0. In the latter case, one conditions on hitting  $A_n$ , and then passes to the limit as  $|x| \rightarrow \infty$ . This mechanism may be formalised using so-called harmonic measure ([K97, K119]).

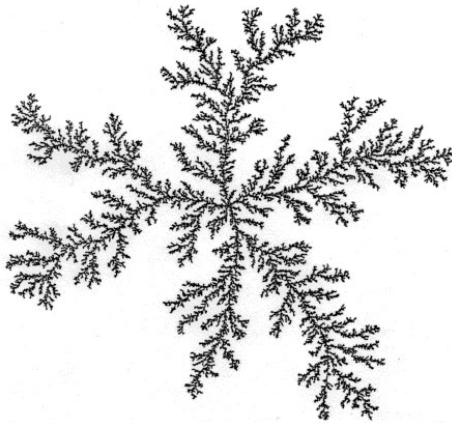


Fig. 3.1: A simulation of a two-dimensional diffusion limited aggregation. (By courtesy of Alette Mandelbrot.)

Computer simulations of [122] and others indicate that  $A_n$  grows in the manner of a fractal set, with arms that extend across space, and whose embrace tends to trap the incoming particle when it is still far from the origin. One way of measuring this effect is via the radius of  $A_n$ ,  $\text{rad}(A_n) = \max\{|a| : a \in A_n\}$ , and it is believed that  $\text{rad}(A_n)$  grows in the manner of  $n^\alpha$  for some  $\alpha$ . It is immediate by the isoperimetric inequality that such  $\alpha$  satisfies  $d^{-1} \leq \alpha \leq 1$ .

**Theorem 3.10** [K98, K113] *There exists a constant  $C = C(d)$  such that, a.s. eventually,*

$$\text{rad}(A_n) \leq \begin{cases} Cn^{2/(d+1)} & \text{if } d \geq 2, d \neq 3, \\ C(n \log n)^{1/2} & \text{if } d = 3. \end{cases}$$

The  $d = 3$  bound has been improved slightly by Lawler [93, Thm 2.6.1] to  $\text{rad}(A_n) \leq Cn^{1/2}(\log n)^{1/4}$ . Subject to this, the results of Theorem 3.10 (dated 1990) remain the best rigorous results currently known for DLA on  $\mathbb{Z}^d$ . No non-trivial lower bound on  $\alpha$  is currently known.

Simulations suggest that  $\text{rad}(A_n) \sim Cn^\alpha$  where the ‘dimension’  $1/\alpha$  satisfies

$$\frac{1}{\alpha} \approx \begin{cases} 1.7 & \text{if } d = 2, \\ \frac{d^2 + 1}{d + 1} & \text{when } d \text{ is large.} \end{cases}$$

See, for example, [119].

### 3.7 Random walk in random scenery

The subject of random walk in random scenery (RWRS) seems to have been initiated by Kesten and Spitzer [K69]<sup>2</sup>. Let  $\{\xi(x) : x \in \mathbb{Z}\}$  be iid random variables, and let  $W_n = \sum_{i=1}^n \xi(S_n)$  be the cumulative scenery of an independent random walk  $(S_n)$ . The process  $(W_n)$ , when suitably normalized, converges to a self-similar process, under the assumption that the  $\xi(x)$  and the steps  $X_i$  belong to the domains of attraction of stable laws.

A number of authors, including Kasteleyn [87] and Keane and den Hollander [88], developed the ergodic theory of the scenery process viewed progressively by the random walk.

In a more recently considered RWRS problem, suppose there are only two possible sceneries  $\xi, \xi'$  on a graph  $G$ . By progressive observation of its local scenery, can a random walker on  $G = (V, E)$  decide which of the two is the true scenery? In a randomized version of this question, the set of sceneries is taken as  $\Xi(k) = \{0, 1, \dots, k\}^V$ , and a random scenery  $\eta \in \Xi$  is picked according to uniform product measure on  $\Xi(k)$ . The concept of ‘distinguishability between sceneries’ requires a definition, and once that is done, one arrives at the following theorem of Benjamini and Kesten.

#### Theorem 3.11

- (a) [K142] *For  $G = \mathbb{Z}, \mathbb{Z}^2$  and  $k = 1$ , and any fixed scenery  $\xi \in \Xi(1)$ , we have that almost every  $\eta$  is distinguishable from  $\xi$ .*
- (b) [K144] *Let  $G = \mathbb{Z}$ , and let  $\hat{\xi}$  be obtained from the scenery  $\xi \in \Xi(k)$  by altering the value  $\xi(0)$  at the origin only. If  $k \geq 5$ , for almost every  $\eta \in \Xi(k)$ , we have that  $\eta$  and  $\hat{\eta}$  are distinguishable.*

There has been a great deal of progress with this beautiful problem since the above, due in part to Henry Matzinger, one of Harry’s former PhD students. The reader is directed to [98] for relevant references.

<sup>2</sup> Published in a volume of the *Zeitschrift für Wahrscheinlichkeitstheorie und verw. Geb.*, and dedicated to its first editor, Leopold Schmetterer, on his 60th birthday in 1979.



#### 4 Products of random matrices

Harry Kesten and Hillel Furstenberg spent the academic year 1958–9 as instructors at Princeton University, where they became interested in recent work of Bellman. In the article [15], one of 19 works by Bellman listed on MathSciNet for 1954, he derived some results for the asymptotic behaviour of the product of  $n$  independent, random  $2 \times 2$  matrices. Furstenberg and Kesten were able to extend these results very considerably in their now well-known paper, which was described by Bellman as “difficult and ingenious”.

**Theorem 4.1** [K13] *Let  $M_1, M_2, \dots$  be a stationary ergodic sequence of random  $d \times d$  matrices, such that  $\mathbb{E} \log^+ \|M_1\| < \infty$ . Then  $Y_n = M_n M_{n-1} \cdots M_1$  satisfies*

$$\lim_{n \rightarrow \infty} \frac{1}{n} \log \|Y_n\| = E \quad a.s.,$$

where

$$E = \lim_{n \rightarrow \infty} \frac{1}{n} \mathbb{E}(\log \|Y_n\|).$$

Here,  $\|A\| = \max_i \sum_j |a_{ij}|$  for  $A = (a_{ij})$ . A central limit theorem holds subject to appropriate conditions on the  $M_n$ .

Their analysis made use of some subadditivity, but they did not anticipate the forthcoming theory of subadditive stochastic processes (see Section 7.7), which would later furnish a short proof of some of their results. The Oseledec multiplicative ergodic theorem, which appeared a few years later ([103]), may be viewed as a generalization of the results of [K13].

In the article [K52], Harry studied the stochastic recurrence  $Y_n = M_n Y_{n-1} + Q_n$ , where the  $(M_n, Q_n)$  are independent, identically distributed pairs of  $d \times d$  matrices, and the  $Y_n$  are  $d$ -vectors. He noted that such equations occur in a variety of settings including RWRE, branching processes in a random environment, control theory, and models for evolution and cultural inheritance. Key to this study is the behaviour of the products  $M_1 M_2 \cdots M_n$ . His results include a connection to the stable laws, and a renewal theory for products of random matrices. Near the heart of the work (when  $d = 1$ ) lies the stochastic equation  $Y \stackrel{d}{=} MY + Q$ , and the conclusion that such  $Y$  can be heavy-tailed. This work has generated a considerable amount of interest since in probability, statistics, and mathematical finance, as noted by the authors of [23]: “The highly praised Kesten paper has motivated several generations of researchers to work on closely related topics”.

Later, in work motivated by the potlatch process, Kesten and Spitzer [K85] investigated the weak convergence of products of independent non-negative random matrices, and particularly conditions under which the product converges weakly, without normalization, to a measure that is not concentrated on the zero matrix.

#### 5 Self-avoiding walks

A *self-avoiding walk* (SAW) on a graph is a path that visits no vertex more than once. SAWs were introduced by Orr [102] as a simple model for long-chain polymers (see Flory [56]), and counting SAWs on a given graph is a fundamental combinatorial problem with ramifications in both mathematics and physics.

Let  $\mathbb{Z}^d$  be the  $d$ -dimensional hypercubic lattice with  $d \geq 2$ , and let  $\chi_n$  be the number of  $n$ -step SAWs starting at the origin. The principal counting problem is to establish the asymptotic behaviour of  $\chi_n$  as  $n \rightarrow \infty$ , and to determine the radius of a ‘typical’ SAW of length  $n$ . In a notable paper [73], Hammersley and Morton used subadditivity to show that there exists a ‘connective constant’  $\kappa = \kappa(\mathbb{Z}^d)$  given by

$$\frac{1}{n} \log \chi_n \rightarrow \log \kappa \quad \text{as } n \rightarrow \infty,$$

which is to say that  $\chi_n = \kappa^{n(1+o(1))}$ .

Self-avoiding walks have earned a reputation for being hard to study, and there remains much to understand despite progress over more than 50 years. For example it remains an open problem to prove that

$$\chi_{n+1}/\chi_n \rightarrow \kappa \quad \text{as } n \rightarrow \infty,$$

despite Harry’s ratio-limit theorem from 1963.

**Theorem 5.1** *Let  $d \geq 2$ .*

- (a) [K24] *The number  $\chi_n$  of  $n$ -step SAWs on  $\mathbb{Z}^d$  starting at the origin satisfies*

$$\left| \frac{\chi_{n+2}}{\chi_n} - \kappa^2 \right| \leq An^{-\frac{1}{3}},$$

*for some constant  $A$ .*

- (b) [K28] *We have that  $\chi_n \leq \kappa^n \exp\{Bn^{2/(d+2)} \log n\}$  for some constant  $B$ .*

Part (a) was proved using a surgery that replaces one part of a SAW by another; the 2 appears because, since  $\mathbb{Z}^d$  is bipartite, parity of lengths is preserved in surgery. In the proof, Harry introduced an argument known now as ‘Kesten’s pattern theorem’, which has since been very useful in a number of contexts. It states that any configuration of  $k$  consecutive steps, that has the property that it can occur more than once in an  $n$ -step SAW, has to occur at least  $an$  times, for some  $a > 0$ , in all but ‘exponentially few’ such SAWs.

While it is a simple consequence of subadditivity that  $\chi_n \geq \kappa^n$ , upper bounds on  $\chi_n$  are harder to derive. Hammersley and Welsh [74] had earlier proved that  $\chi_n \leq \kappa^n \exp\{Bn^{\frac{1}{2}}\}$  for all  $d \geq 2$ , and Theorem 5.1(b) was an improvement of this for  $d \geq 3$ . The Hammersley–Welsh inequality remained the best available when  $d = 2$  until the appearance in 2018 of [47] with an improved exponent of order  $n^{\frac{1}{2}-\epsilon}$ . In 1992, Hara and Slade [77, 78] developed a lace expansion for SAWs that yielded  $\chi_n \sim C\kappa^n$  when  $d \geq 5$ . Part (b), above, remains the best current upper bound when  $d = 3, 4$ . As remarked in [97, p. 69], Harry stated part (b), but he proved only a weaker bound in [K28] since he hoped someone would find a sharper inequality.

The theory of self-avoiding walks on two-dimensional lattices is an important topic of current research. Duminil-Copin and Smirnov [49] proved the longstanding conjecture that the connective constant of the hexangular lattice  $\mathbb{H}$  satisfies  $\kappa(\mathbb{H}) = \sqrt{2} + \sqrt{2}$ , and in so doing presented a rigorous connection between two-dimensional SAWs and conformal invariance. It is a notorious open problem to prove that, when suitably rescaled, a uniformly random  $n$ -step SAW on  $\mathbb{H}$  converges as  $n \rightarrow \infty$  to so-called  $\text{SLE}_{8/3}$ .

## 6 Branching processes

The branching process (or, as Harry liked in later years to write, the Bienaymé–Galton–Watson process) is the most fundamental stochastic model for population growth. Each individual has a family of offspring, and the family-sizes are drawn independently from a given distribution. Branching processes have been used in a multitude of application areas, and they continue to be a source of wonderful mathematical problems.

Let  $Z_n$  be the size of the  $n$ th generation of a branching process, and suppose  $Z_0 = 1$  and  $\mu = \mathbb{E}(Z_1) < \infty$ . It is easy to see that  $\mathbb{E}(Z_n) = \mu^n$ , so that  $\mu$  may be viewed as the average rate of population growth. It is an undergraduate exercise (due to Christensen and Steffensen in 1930, see [2]) that the process  $Z$  becomes a.s. extinct, in that a.s.  $Z_n = 0$  for large  $n$ , if  $\mu < 1$ , and not if  $\mu > 1$ . In the latter case, the extinction probability  $\eta$  is easily calculated. This and very much more is explained in Harris's influential book [80] from 1963 on the subject, which includes an account of 'multitype' processes with more than one type of individual.

Harry wrote a number of significant articles about branching processes. Perhaps his widest known work is his paper [K34], one of three joint works with Stigum concerned with multitype branching processes, written around 1966, namely [K33, K34, K38]. They extended work of Levinson [95] concerning the convergence of supercritical multitype branching processes, and gave a necessary and sufficient condition concerning the mean of the associated martingale  $W_n = Z_n/\mu^n$ . This condition was new even for processes with only one type, and it is in this simpler form that it is presented here.

**Theorem 6.1** [K34] *Let  $Z = (Z_n)$  be a branching process with  $Z_0 = 1$  and  $\mu := \mathbb{E}(Z_1) > 1$ . The almost-sure limit  $W = \lim_{n \rightarrow \infty} W_n$  satisfies  $\mathbb{E}(W) = 1$  if and only if  $\mathbb{E}(Z_1 \log^+ Z_1) < \infty$ . Under this condition,  $W$  has an atom of size  $\eta$  at 0, and is absolutely continuous on  $(0, \infty)$ .*

These conclusions were known already subject to a second moment condition, and the authors of [K34] observed that the main novelty of their work lay in the identification of the condition  $\mathbb{E}(Z_1 \log^+ Z_1) < \infty$ . An interesting discussion of these and further results is found in [96].

Celebrated theorems of Kolmogorov [90] and Yaglom [124] identified the speed of extinction of a critical branching process (when  $\mu = 1$ ), and its weak limit conditional on non-extinction. With Ney and Spitzer, Harry weakened their third-moment condition to the necessary and sufficient second-moment condition, using "traditional" tools.

**Theorem 6.2** ([K32]) *Let  $Z = (Z_n)$  be a branching process with  $Z_0 = 1$  and  $\mu := \mathbb{E}(Z_1) = 1$ . If  $\sigma^2 := \text{var}(Z_1)$  satisfies  $0 < \sigma^2 \leq \infty$ , then*

$$n\mathbb{P}(Z_n > 0) \rightarrow \frac{2}{\sigma^2}, \quad \mathbb{P}(Z_n > nx \mid Z_n > 0) \rightarrow e^{-2x/\sigma^2},$$

as  $n \rightarrow \infty$ .

The incipient infinite percolation cluster  $\tilde{C}$  is a connected subgraph of  $\mathbb{Z}^2$  with fractal-like qualities. One way to understand something about the geometry of  $\tilde{C}$  is to study the variance of random walk thereon, and in particular to show that it is subdiffusive (see Section 7.4). Perhaps as a warm-up to this problem, Harry

included in his paper [K94] an account of random walk on the family tree of a critical branching process conditioned on non-extinction, and his results include the following.

**Theorem 6.3** [K94] *Let  $Z$  be a critical branching process satisfying  $Z_0 = 1$  and  $0 < \text{var}(Z_1) < \infty$ , and let  $T$  be a rooted tree with the law of  $Z$  conditioned on non-extinction. Let  $X = (X_n)$  be a random walk on  $T$ , and write  $\mathbb{P}$  for the annealed law of  $X$ . The height  $h(X_n)$  is such that  $n^{-\frac{1}{3}}h(X_n)$  converges weakly (under  $\mathbb{P}$ ) to a distribution with no mass at 0.*

The quenched version of the above statement is left open. A corresponding invariance principle is stated but not proved in [K94], since “at this time we only have a monstrously long proof of  $[\dots]$  and we therefore restrict ourselves to the following weaker result ...”. The  $n^{\frac{1}{3}}$  scaling is consistent with the so-called Alexander–Orbach conjecture in the setting of a critical branching process conditioned on non-extinction ([5]).

Harry continued his work on the family-tree  $T$  of a critical branching process in several papers, including [K63] on branching Brownian motion, and [K134] on an application to river basin hydrology published in the Dynkin festschrift. Kesten and Pittel [K148] established an asymptotic formula for the joint distribution for the height and number of leaves of  $T$ .

With Durrett and Waymire in [K116], Harry studied the family-tree  $T_n$  of a branching process, when conditioned to have total size  $n$ . The issue in question was to understand the growth of the weighted height of  $T_n$ , when iid weights are associated with the edges of  $T_n$ . They explored the manner in which the answer depends on the power-law of the weight distribution. Harry returned in [K138] to this edge-weighted process, viewed as a critical branching random walk in which a vertex  $w$  is displaced from its parent  $v$  by the weight of the corresponding edge  $\langle v, w \rangle$ . Let  $M_n$  be the maximal displacement of the  $n$ th generation. If the edge-weights have mean 0 then, conditional on non-extinction at time  $\beta n$  where  $\beta \in (0, \infty)$ , the sequence  $n^{-\frac{1}{2}}M_n$  converges in distribution. This is related to results for Aldous’s continuum random tree and Le Gall’s Brownian snake.

Harry considered in [K50] a probabilistic model for “zygotic mutation without selection at one locus” in population genetics. Subject to a quite technical assumption, he proved a convergence theorem for this model which generalises the principal limit theorem for a supercritical branching process.

Estimates concerning the geometry of a branching process turn out to be key to Harry’s study with Grimmett of the electrical resistance of a complete graph ([K82, K165]). In [K109], he developed detailed asymptotics for a supercritical branching process with a countable infinity of types, in order to derive properties of projections of random Cantor sets.

## 7 Percolation theory

### 7.1 The critical probability in two dimensions

The percolation process is a canonical model for a disordered medium. For concreteness, consider the  $d$ -dimensional hypercubic lattice  $\mathbb{Z}^d$  with  $d \geq 2$ , and let

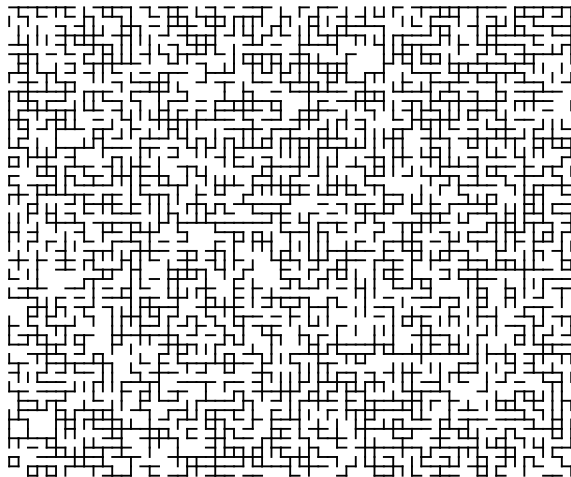


Fig. 7.1: A simulation of bond percolation on  $\mathbb{Z}^2$  with  $p = 0.51$ .

$p \in [0, 1]$ . We declare an edge of  $\mathbb{Z}^d$  to be *open* with probability  $p$ , and *closed* otherwise, different edges having independent states. What can be said about the geometry of the subgraph induced by the open edges (as illustrated in Figure 7.1), and in particular for what values of  $p$  does this graph possess an infinite cluster?

As Harry reflected in the preface of [K80], percolation is both a source of fascinating problems, and a central topic in the physical theory of phase transitions. The mathematical theory originated in work of Broadbent and Hammersley [22] on diffusion through a random medium, as a model for the transmission of particles through a face mask. Percolation theory is now a key tool in the mathematics of interacting systems, and a testbed for new techniques. The two-dimensional theory has been especially prominent in the currently active theory of random planar geometry.

The *percolation probability* is the function

$$\theta(p) = \mathbb{P}_p(\text{the origin lies in an infinite open cluster}),$$

and the *critical probability* is given by

$$p_c(\mathbb{Z}^d) = \sup\{p : \theta(p) = 0\}.$$

It is fundamental that  $0 < p_c(\mathbb{Z}^d) < 1$  when  $d \geq 2$  (see [62] for a general account of percolation). The obvious problem of the exact calculation of  $p_c(\mathbb{Z}^d)$  is intractable when  $d \geq 3$ . The case  $d = 2$  is, however, very special, because of a property of self-duality possessed by the square lattice, which motivated the then notorious conjecture that  $p_c(\mathbb{Z}^2) = \frac{1}{2}$ . Harry proved this in 1980.

**Theorem 7.1** [K70] *The critical probability of bond percolation on the square lattice is  $p_c(\mathbb{Z}^2) = \frac{1}{2}$ .*

The conjecture that  $p_c(\mathbb{Z}^2) = \frac{1}{2}$  went back at least to 1960. In that year, Harris [79] proved that  $\theta(\frac{1}{2}) = 0$ , whence  $p_c(\mathbb{Z}^2) \geq \frac{1}{2}$ , using a clever geometrical argument

combined with a positive-correlation inequality, both of which have lasting significance. Hammersley’s numerical simulations indicated a value strictly less than  $\frac{1}{2}$  (“what better evidence could there be for  $p_c(\mathbb{Z}^2) = \frac{1}{2}$ ”, he would say). There were important papers by Russo and Seymour/Welsh that led to Harry’s famous article [K70] where he quantified the idea of ‘sharp threshold’ and hence derived a proof of Theorem 7.1. The related concept of ‘influence’ has since been independently systematised in general settings by Kahn, Kalai, Linial [85], Talagrand [117], and their successors (see [63, Chap. 4]).

Harry’s subsequent volume [K80] is a fairly formidable work on percolation in two dimensions, designed unapologetically for the mathematician. These two works [K70, K80] brought prominence to percolation, and ushered in a period of intense activity, initially in two dimensions and later more generally. The exact calculation of Theorem 7.1 has been vastly extended since to percolation on a large family of isoradial graphs ([69]), that is, graphs embedded in  $\mathbb{R}^2$  in such a way that every face is convex with a circumcircle of given radius. Such exact values were later extended to the critical points of random-cluster models on isoradial graphs ([48]).

## 7.2 Disjoint occurrence and the van den Berg–Kesten (BK) inequality

Correlation inequalities play a very important role in the theory of disordered systems in mathematics and physics. The most prominent such inequality for percolation is the so-called (Harris–)FKG inequality, which states that increasing events are positively associated. In investigating a converse inequality, van den Berg made a conjecture which he proved jointly with Harry.

Let  $|E| < \infty$  and  $\Omega = \{0, 1\}^E$ , endowed with a product measure  $\mathbb{P}$ . Let  $A, B$  be increasing events in the finite product space  $(\Omega, \mathbb{P})$ . For  $\omega \in \Omega$  and  $F \subseteq E$ , let  $\omega_F$  denote the configuration which agrees with  $\omega$  on  $F$  and equals 0 elsewhere. The *disjoint occurrence* event  $A \circ B$  is defined by

$$A \circ B = \left\{ \omega \in \{0, 1\}^E : \exists F \subseteq E \text{ such that } \omega_F \in A, \omega_{E \setminus F} \in B \right\}.$$

**Theorem 7.2** [K87] *For increasing events  $A, B \subseteq \Omega$ , we have that  $\mathbb{P}(A \circ B) \leq \mathbb{P}(A)\mathbb{P}(B)$ .*

This ‘BK inequality’ is a delicate and tantalising result, with a number of useful applications. It was extended by Reimer [105] to a disjoint-occurrence inequality without the assumption that the events be increasing. Van den Berg and Jonasson [16] have proved Theorem 7.2 with  $\mathbb{P}$  replaced by the uniform measure on subsets of  $E$  with given fixed cardinality.

## 7.3 Uniqueness of the infinite cluster

When  $p > p_c$ , there exists a.s. at least one infinite open cluster, but how many? This uniqueness problem was answered by Harry in joint work with Aizenman and Newman. The proof is very general, but we state it here for the bond model on  $\mathbb{Z}^d$ .

**Theorem 7.3** [K95] *Consider bond percolation on  $\mathbb{Z}^d$  with  $d \geq 2$ , and let  $p \in [0, 1]$ . The number  $N$  of infinite open clusters satisfies*

$$\text{either } \mathbb{P}_p(N = 0) = 1 \quad \text{or} \quad \mathbb{P}_p(N = 1) = 1.$$

Paper [K95] was soon superseded by the elegant argument of Burton and Keane [24], but it remains important as a source of quantitative estimates, as, for example, for the lower bound of [28] on the so-called two-arm exponent.

Harry worked also on uniqueness in long-range models on subgraphs of  $\mathbb{Z}^d$ . When  $d = 1$ , he and Durrett [K111] extended a special calculation of Shepp [110] in which sites  $i$  and  $j$  are connected with probability  $p(i, j)$ , where  $p$  is a homogeneous function of order  $-1$ . Turning to (spatially homogeneous) long-range percolation, let  $p : \mathbb{Z}^d \rightarrow [0, 1]$  be symmetric. An undirected edge is positioned between sites  $i$  and  $j$  with probability  $p(j - i)$ . When is the ensuing random graph a.s. connected? The necessary and sufficient condition according to Grimmett, Keane, and Marstrand [66] is that  $\sum_z p(z) = \infty$  (subject to a natural irreducibility assumption on the support of  $p$ ). The argument used there fails for subspaces of the form  $\mathbb{Z}^{d-e} \times \mathbb{Z}_+^e$  with  $e \geq 1$ , and likewise the methods of [K95, 24, 86] do not seem to apply for  $d \geq 2$ ,  $e \geq 1$ . Harry showed in [K122] that a corresponding summability condition is both necessary and sufficient.

#### 7.4 Incipience and random walk

Whereas Harris proved in [79] that  $\theta(\frac{1}{2}) = 0$  when  $d = 2$ , the proof that  $\theta(p_c(\mathbb{Z}^d)) = 0$  for all  $d \geq 3$  has so far resisted allcomers (it is now known for  $d \geq 11$ , [55], using an elaboration of the lace expansion of [76]). There was interest among physicists in the idea that a large two-dimensional cluster is ‘nearly infinite’ when  $p = \frac{1}{2}$ . Harry’s response to this speculation was a pair of coordinated limit theorems.

**Theorem 7.4** [K90] *Consider bond percolation on  $\mathbb{Z}^2$ , and let  $C$  denote the open cluster containing the origin 0. The following two conditional probability measures converge, and they have the same limit  $\nu$ :*

1.  $\mathbb{P}_{\frac{1}{2}}(\cdot \mid K_n)$  as  $n \rightarrow \infty$ , where  $K_n$  is the event that 0 is connected by an open path to some lattice point with distance  $n$  from 0,
2.  $\mathbb{P}_p(\cdot \mid C \text{ is infinite})$  as  $p \downarrow \frac{1}{2}$ .

The measure  $\nu$  (and the open cluster  $\tilde{C}$  at the origin under  $\nu$ ) is called the *incipient infinite cluster*. While the fractal nature of  $\tilde{C}$  is still not properly understood, Harry exhibited its mass dimension in terms of that of the  $\mathbb{P}$ -probability  $\pi_n$  that the origin is connected to the half-space  $[n, \infty) \times \mathbb{Z}$ .

**Theorem 7.5** [K90] *As  $\epsilon \downarrow 0$ , uniformly in  $n$ ,*

$$\nu \left( \epsilon < \frac{|\tilde{C} \cap B_n|}{n^2 \pi_n} < \frac{1}{\epsilon} \right) \rightarrow 1,$$

where  $B_n = [-n, n]^2$ .

Theorem 7.5 is complemented in [K90] by the inequalities

$$C_1 n^{-\frac{1}{2}+\eta_1} \leq \pi_n \leq C_2 n^{-\eta_2},$$

for some  $\eta_i > 0$ . The sizes of large open clusters of  $B_n$  were studied in [K163] by Borgs, Chayes, Kesten, and Spencer for an interval of values of  $p$  around the critical value  $p_c$ , with similar results for  $3 \leq d \leq 6$  subject to an extensive set of hypotheses.

De Gennes proposed in [42] the metaphor of a random ant in order to explore the geometry of a random set. In a continuation of the above work, Harry studied a random walk  $X = (X_n : n \geq 0)$  on the incipient infinite cluster  $\tilde{C}$  starting at the origin.

**Theorem 7.6** [K94] *For some  $\epsilon > 0$ ,  $(n^{-\frac{1}{2}+\epsilon} X_n : n \geq 0)$  is tight.*

In particular, there exists  $\epsilon > 0$  such that  $n^{-\frac{1}{2}+\epsilon} X_n \rightarrow 0$  as  $n \rightarrow \infty$ . Since a diffusion process grows in the manner of  $n^{\frac{1}{2}}$ , this implies the subdiffusivity of  $X$ . This slowing occurs because of the dangling regions and blind allies on a multiplicity of scales that are found in the random graph  $\tilde{C}$ . More detailed results are available in the related situation of a random walk on the family tree of a critical branching process conditioned on non-extinction; see [K94] and Theorem 6.3.

The incipient infinite cluster, with the random walk thereon, has attracted much attention in a variety of further contexts since Harry's work on  $\mathbb{Z}^2$ . See, for example, the book of Heydenreich and van der Hofstad [81] and the references therein. A well-known prediction of Alexander and Orbach [5] states that, for random walk  $X$  on the incipient infinite cluster of  $\mathbb{Z}^d$  (if it exists), we have

$$\mathbb{P}(X_{2n} = 0) \approx n^{-\frac{2}{3}} \quad \text{as } n \rightarrow \infty.$$

This is believed to hold when  $d \geq 6$ , but has so far been proved (by Kozma and Nachmias) only in the large- $d$  case, which these days means  $d \geq 11$  (see [91] and [55, 81]).

De Genne's 'ant in a labyrinth' is relevant also to random walk on the infinite open (supercritical) percolation cluster, where it provided a concrete example of a non-elliptic RWRE. With Grimmett and Zhang, Harry showed the following early result in the area.

**Theorem 7.7** [K127] *Let  $d \geq 2$  and  $p > p_c(\mathbb{Z}^d)$ . Random walk on the a.s. unique infinite open cluster is recurrent if and only if  $d = 2$ .*

Precise estimates have been obtained since for the transition probabilities and central limit theory of this random walk, and the reader is referred to the papers [6, 10] for accounts of recent work.

## 7.5 Supercritical percolation

The size  $|C|$  of the cluster at the origin has an exponentially decaying tail in the subcritical phase when  $p < p_c$ . The situation is different when  $p > p_c$ , in that the distribution of  $|C|$  is in part controlled by the size of its surface. The



isoperimetric inequality suggests a stretched exponential distribution. There was a proof by Aizenman, Delyon, and Souillard [1] that  $\mathbb{P}_p(|C| = n) \geq e^{-\beta n^{(d-1)/d}}$  for some  $\beta(p) > 0$ . Kesten and Zhang [K114] showed the complementary inequality, by a novel block argument that has been useful since.

**Theorem 7.8** [1, K114] *Let  $d \geq 3$  and  $p_c(\mathbb{Z}^d) < p < 1$ . There exist functions  $\beta, \gamma$ , taking values in  $(0, \infty)$ , such that*

$$e^{-\beta n^{(d-1)/d}} \leq \mathbb{P}_p(|C| = n) \leq e^{-\gamma n^{(d-1)/d}}, \quad n \geq 1.$$

When  $d \geq 3$ , the authors of [K114] were in fact only able to show the above upper bound for  $p$  exceeding a certain value  $p_{\text{slab}}$ , but the full conclusion for  $p > p_c$  followed once Grimmett and Marstrand [70] had proved the slab limit  $p_c = p_{\text{slab}}$ . Sharp asymptotics and the associated Wulff construction were established later by Alexander, Chayes, and Chayes [4] when  $d = 2$ , and by Cerf [26, 27] in the substantially more challenging situation of  $d = 3$ . The Kesten/Zhang construction of [K114] has recently proved key to the proof of analyticity for the percolation probability  $\theta$  in  $d \geq 3$  dimensions; see [60].

## 7.6 Scaling theory

The critical probability  $p_c$  marks a point of singularity separating the *subcritical phase* (all open clusters are finite) from the *supercritical phase* (there exists an infinite open cluster). The singularity at  $p_c$  has much in common with the phase transitions of statistical physics,

Let  $C$  denote the open cluster containing the origin. According to scaling theory, macroscopic functions such as the percolation probability  $\theta(p) = \mathbb{P}_p(|C| = \infty)$  and the mean cluster size  $\chi(p) = \mathbb{E}_p|C|$  have singularities at  $p_c$  of the form  $|p - p_c|$  raised to an appropriate power called a *critical exponent*. More generally, it is believed that

$$\begin{aligned} \theta(p) &\approx (p - p_c)^\beta, & \chi(p) &\approx (p - p_c)^{-\gamma}, & \text{as } p \downarrow p_c, \\ \kappa'''(p) &\approx |p - p_c|^{-1-\alpha}, & \xi(p) &\approx |p - p_c|^{-\nu}, & \text{as } p \rightarrow p_c, \\ \frac{\mathbb{E}_p(|C|^{k+1}; |C| < \infty)}{\mathbb{E}_p(|C|^k; |C| < \infty)} &\approx |p - p_c|^{-\Delta}, & & \text{for } k \geq 1, \text{ as } p \rightarrow p_c, \end{aligned}$$

where  $\kappa(p)$  is the mean number of clusters per site, and  $\xi(p)$  is the correlation length. The asymptotic relation  $\approx$  is to be interpreted logarithmically (stronger asymptotics are also expected to hold).

In similar fashion, when  $p = p_c$ , several random variables associated with the open cluster at the origin are expected to have power-law tails. More specifically,

$$\begin{aligned} \mathbb{P}_{p_c}(|C| = n) &\approx n^{-1-1/\delta}, & \mathbb{P}_{p_c}(\text{rad}(C) = n) &\approx n^{-1-1/\rho}, \\ \mathbb{P}_{p_c}(0 \leftrightarrow x) &\approx |x|^{2-d-\eta}, \end{aligned}$$

as  $n, |x| \rightarrow \infty$ .

The set of critical exponents (including the eight given above) describes the nature of the singularity, and they are supposedly ‘universal’ in that their values

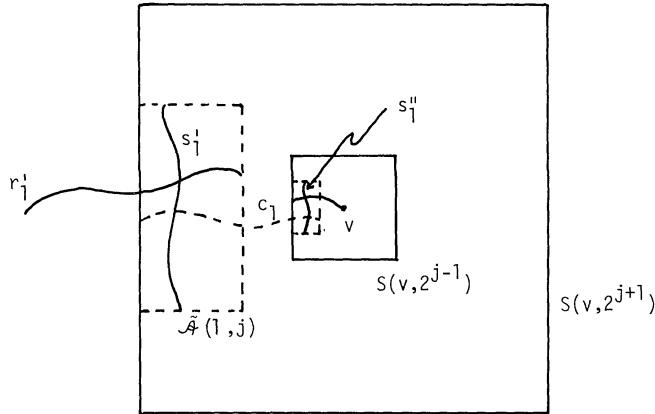


Fig. 7.2: An example of a percolation figure by Harry Kesten, taken from his paper [K102] on scaling theory.

depend on the number  $d$  of dimensions but not on the choice of lattice. They are expected in addition to satisfy the so-called ‘scaling relations’ of statistical physics. It is an open problem to prove almost any of the above in general dimensions.

Extraordinary (but incomplete) progress has been made towards the above when  $d = 2$ . Harry’s work has been a key part of this program. Article [K77] describes early progress in the rigorous study of (non-)smoothness of macroscopic functions. Probably his most important paper in this context was [K102] on the scaling relations.

**Theorem 7.9** [K101, K102] *Let  $d = 2$ . If the limits defining  $\delta$  and  $\nu$  exist, then*

$$\beta = \frac{2\nu}{\delta + 1}, \quad \gamma = 2\nu \frac{\delta - 1}{\delta + 1}, \quad \Delta = 2\nu \frac{\delta}{\delta + 1}, \quad \eta = \frac{4}{\delta + 1}, \quad 2\rho = \delta + 1.$$

This list of relations may seem somewhat sterile when stated in this bald manner. Underlying these relations is a method for relating near-critical and critical percolation, supported by a number of complex geometrical estimates of probabilities (somewhat systematised in [100]). These methods, together with Theorem 7.9 itself, are an important part of the proof of the exact values of critical exponents for site percolation on the triangular lattice  $\mathbb{T}$ :

$$\beta = \frac{5}{36}, \quad \delta = \frac{91}{5}, \quad \gamma = \frac{43}{18}, \quad \eta = \frac{5}{24}, \quad \nu = \frac{4}{3}.$$

This, and much more, has been proved over the last 20 years by Smirnov, Schramm, Lawler, Werner and others (see, for example, [120]). The proof of the existence of critical exponents (for site percolation on  $\mathbb{T}$ ) had to wait for the invention of the SLE processes by Schramm [108]; Smirnov proved Cardy’s formula, and explained conformal invariance (see [112, 25]); and, finally, the team of Lawler, Schramm, and Werner built a theory of SLE and certain related lattice systems (see, for example, [109]).

The impact of Harry’s papers [K101, K102] has been enormous across two-dimensional percolation and related ‘percolative’ systems including models such as dynamical, frozen, and invasion percolation; see, for example, [58, 17, 39].

## 7.7 First-passage percolation

In this time-dependent percolation model on  $\mathbb{Z}^d$ , the edges are assigned independent non-negative ‘time coordinates’, interpreted as the time required to pass along the edge. One studies the region reached from the origin within a given time. This process was introduced by Hammersley and Welsh [75] in 1965. They proved that, subject to certain conditions, the *first passage time*  $a_{0,n}$  from the origin to the point  $(n, 0, \dots, 0)$  satisfies  $a_{0,n}/n \rightarrow \mu$  for some ‘time constant’  $\mu$ . In so doing, they introduced the notion of stochastic subadditivity, and they proved a version of the subadditive ergodic theorem. Subadditivity became recognised as an important technique in probability and combinatorics, and it was a perennial theme in Harry’s work. Indeed, it provides an elegant proof of part of his result with Furstenberg, Theorem 4.1, on the products of random matrices.

Harry and his co-authors resolved a number of significant problems in first-passage percolation, and posed others, in a series of papers spanning nearly 20 years. He established several fundamental properties of the time constant in two dimensions, including positivity and continuity. Let  $U$  be the law of the time coordinates, and  $\mu = \mu(U)$  the time constant.

**Theorem 7.10** *Consider first-passage percolation on  $\mathbb{Z}^2$ .*

- (a) [K73] *If  $U(0) < \frac{1}{2}$ , then  $\mu(U) > 0$ .*
- (b) [K76] *If  $U_k \Rightarrow U$  in the sense of weak convergence, then  $\mu(U_k) \rightarrow \mu(U)$ .*
- (c) [K132] *Let  $U_1$  and  $U_2$  be probability measures on  $[0, \infty)$  with finite means such that  $U_2$  is “useful”. If  $U_1 \leq_{\text{st}} U_2$  but  $U_1 \neq U_2$ , then  $\mu(U_1) < \mu(U_2)$ .*

Concerning part (a), it is immediate that  $\mu(U) = 0$  if  $U(0) > \frac{1}{2}$ . Matters are more delicate when  $U(0) = \frac{1}{2}$ , but nevertheless  $\mu(U) = 0$ , and moreover Kesten and Zhang [K152] proved a central limit theorem for the sequence  $(a_{0,n})$ , when suitably normalised, using martingale central limit theory. This work has been continued by several authors, including in the recent papers [8, 37, 38].

Part (b), which was joint with Cox, was extended only in 2017 by Garet, Marchand, Procaccia, and Th  ret [59] to  $\mathbb{Z}^d$  with  $d \geq 3$ . For an explanation of the ‘usefulness’ condition of part (c), the reader is referred to the original paper. It implies in particular that  $\mu(U_2) > 0$ . Stochastic ordering is denoted by  $\leq_{\text{st}}$ .

Mention should also be made of [K130], which addresses the problem of the rate of convergence of  $a_{0,n}/n$ , and of the degree of roughness of the boundary of the region reached from the origin up to time  $n$ . The scaling theory of such roughness remains an important open problem which has been considered since by several authors (see [30, 36, K188]). It is generally a hard problem to obtain decent lower bounds for a subadditive stochastic process (see the relevant comments in [8, p. 140]).

Exponential estimates and box arguments were a regular theme of Harry’s work, and they featured in his large-deviation theorem for first passage times.

**Theorem 7.11** [K81] *Consider first-passage percolation on  $\mathbb{Z}^d$  with  $d \geq 2$ , and let  $\epsilon > 0$ .*

- (a) *If  $U$  has finite variance, there exist  $A, B > 0$  such that*

$$\mathbb{P}(a_{0n} < n(\mu - \epsilon)) \leq Ae^{-Bn}, \quad n \geq 1.$$

(b) If  $\int e^{\gamma x} U(dx) < \infty$  for some  $\gamma > 0$ , there exist  $C, D > 0$  such that

$$\mathbb{P}(a_{0n} > n(\mu + \epsilon)) \leq Ce^{-Dn}, \quad n \geq 1.$$

More refined analysis shows that the upper large deviations of part (b) can decay exponentially in  $n^d$ , whereas the order of the lower deviations given above is typically correct. The contrast between lower and upper large deviations for subadditive functionals has attracted quite a lot of attention since Harry's work. See, for example, [32, 35].

Theorem 7.11 has applications to the theory of random electrical networks, and to the diffusion constant in a random medium. This connection led Harry to a fairly systematic study of the 'random flow' problem: what can be said about the maximal flow across a cube of  $\mathbb{Z}^d$  with random capacities assigned to the edges. For the sake of definiteness, consider the box  $A_{n,k} = [0, n] \times [0, k]^2$  in  $\mathbb{Z}^3$ , with bottom  $B_{n,k} = \{0\} \times [0, k]^2$  and top  $T_{n,k} = \{n\} \times [0, k]^2$ . To the edges  $e$  of  $A_{n,k}$  are assigned iid capacities  $C(e) \geq 0$ . Let  $\Phi_{n,k}$  be the maximum flow from  $B_{n,k}$  to  $T_{n,k}$  inside  $A_{n,k}$  subject to the constraint that the absolute value of the flow along any  $e$  is no larger than  $C(e)$ . The following is an exemplar of Harry's results.

**Theorem 7.12** [K88, K103] *Let  $n = n(k) \rightarrow \infty$  as  $k \rightarrow \infty$  in such a way that, for some  $\delta > 0$ ,  $k^{-1+\delta} \log n \rightarrow 0$ . There exists  $p_0 > 0$  such that, if  $\mathbb{P}(C = 0) < p_0$  and  $\mathbb{E}(e^{\gamma C}) < \infty$  for some  $\gamma > 0$ , then the limit*

$$\nu = \lim_{k \rightarrow \infty} \frac{1}{k^2} \Phi_{n,k}$$

*exists a.s. and in  $L^1$ . Furthermore,  $\nu \in (0, \infty)$ .*

Some tricky geometrical issues arise in the proof, concerning the combinatorics and topology of dual surfaces in  $\mathbb{R}^3$ . The condition involving  $p_0$  has been removed recently by Zhang [125], who proved that the limit  $\nu$  is strictly positive if and only if  $\mathbb{P}(C = 0) < 1 - p_c(\mathbb{Z}^d)$ . The problem of lower large-deviations of the  $\Phi_{n,k}$  has been settled by Rossignol and Th  ret [106] and Cerf and Th  ret [29].

For recent accounts of percolation and first-passage percolation, the reader is referred to [K188, 9].

## 7.8 Word percolation

The 'word percolation' problem originated in work of Dekking [43] on trees, and was developed by Benjamini and Kesten as a generalisation of site percolation and its variant called AB percolation. We start with the site percolation model on a given graph  $G = (V, E)$  with density  $p$ , that is, a family  $(X_v : v \in V)$  of independent Bernoulli variables with  $\mathbb{P}_p(X_v = 1) = 1 - \mathbb{P}_p(X_v = 0) = p$ . Consider an alphabet of two letters 0, 1, and write  $\Xi = \{0, 1\}^{\mathbb{N}}$  for the set of infinite words in this alphabet. A word  $w = (w_i : i \in \mathbb{N}) \in \Xi$  is said to be 'seen from vertex  $v$ ' if there exists a self-avoiding walk  $(v_1, v_2, v_3, \dots)$  from  $v_1 = v$  such that  $X_{v_i} = w_i$  for all  $i$ ;  $w$  is said to be 'seen' if it is seen from some  $v$ . The site percolation problem corresponds to the word  $(1, 1, 1, \dots)$ , and AB percolation to the word  $(1, 0, 1, 0, \dots)$ .

The questions of interest are: which words are seen from a given  $v$  with strictly positive probability, and which words are seen somewhere in  $G$  with probability 1? Harry wrote three papers on this topic with subsets of Benjamini and Sidoravicius/Zhang. Let  $S_v$  be the set of words seen from  $v$ , and let  $S_\infty = \bigcup_v S_v$ .

**Theorem 7.13** *Consider word percolation on the graph  $G$ .*

- (a) [K136] *Let  $G = \mathbb{Z}^d$  and  $\mathbb{P} := \mathbb{P}_{\frac{1}{2}}$ . Then*

$$\begin{aligned} \mathbb{P}(S_\infty = \Xi) &= 1 \quad \text{if } d \geq 10, \\ \mathbb{P}(S_v = \Xi \text{ for some } v) &= 1 \quad \text{if } d \geq 40. \end{aligned}$$

- (b) [K156] *Let  $G$  be the triangular lattice  $\mathbb{T}$  and  $\mathbb{P} := \mathbb{P}_{\frac{1}{2}}$ . With  $\mathbb{P}$ -probability 1, every periodic word except  $(1, 1, 1, \dots)$  and  $(0, 0, 0, \dots)$ , and almost every non-periodic word, is seen. Here, 'almost every word' means with  $\mu_\beta$ -probability 1 where  $\mu_\beta$  is product measure on  $\Xi$  with some given density  $\beta \in (0, 1)$ .*
- (c) [K167] *Let  $G$  be obtained from  $\mathbb{Z}^2$  by adding two diagonals to each face. We have  $\mathbb{P}_p(S_\infty = \Xi) = 1$  whenever  $p \in (1 - p_c, p_c)$ , with  $p_c (< \frac{1}{2})$  the critical probability of site percolation on  $G$ .*

The word problem continues to fascinate probabilists, as exemplified by [101], where Theorem 7.13(a) is extended to the statement that  $\mathbb{P}(S_\infty = \Xi) = 1$  for  $d \geq 3$ . Mention is made of three related embedding problems which are proving to be challenging: the Lipschitz embeddings of [64, 65], the quasi-isometric embeddings of [11, 12], and the Winkler compatibility problem [K193].

## 7.9 Related processes

The percolation model is only the beginning of a rich modern theory of disordered discrete systems, often indexed by lattices such as  $\mathbb{Z}^d$ . Brief accounts of Harry's contributions to a selection of related areas follow.

### *Greedy lattice animals*

To the vertices  $v$  of  $\mathbb{Z}^d$  are assigned iid random variables  $X_v$  satisfying  $X_v \geq 0$ . The *weight* of a subset  $U \subseteq V$  is defined as the sum  $W(U) = \sum_{v \in U} X_v$ . Let  $M_n$  be the maximal weight of connected subgraphs (also known as 'lattice animals') with  $n$  vertices and containing the origin. It was shown by Cox, Gandolfi, Griffin, and Kesten in [K126, K133] that, subject to a suitable moment condition on the  $X_v$ , the ratio  $M_n/n$  converges as  $n \rightarrow \infty$ . A similar result holds for  $n$ -step self-avoiding walks (SAWs) from the origin. Partial results without the positivity assumption on the  $X_v$  are found in [K164].

### *$\rho$ -percolation*

Consider site percolation on  $\mathbb{Z}^d$  with  $d \geq 2$  and density  $p$ , and let  $\rho \in (0, 1]$ . Menshikov and Zuev [99] initiated the study of so-called  $\rho$ -percolation: we say that  $\rho$ -percolation occurs if there exists, with strictly positive probability, an infinite SAW  $w = (w_0, w_1, \dots)$  from the origin  $w_0 = 0$  such that the proportion  $\pi_n$  of open vertices in the first  $n$  vertices of  $w$  satisfies  $\liminf_{n \rightarrow \infty} \pi_n \geq \rho$ . Thus,  $\rho$ -percolation is connected to the greedy problem for SAWs above.

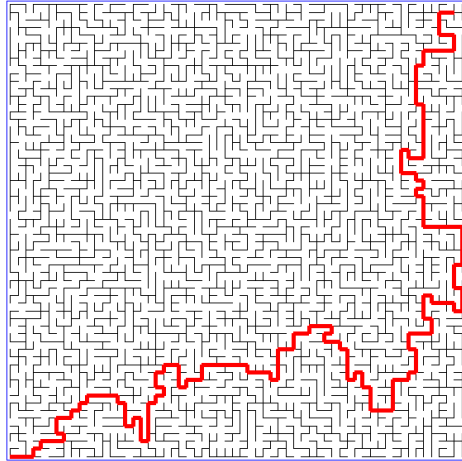


Fig. 7.3: A uniform spanning tree (UST) on a square of the square lattice. It contains a unique path between any two given boundary vertices, and this path has the law of a loop-erased random walk. (By courtesy of Oded Schramm.)

In [K160], Kesten and Su studied  $\rho$ -percolation on the directed graph obtained from  $\mathbb{Z}^d$  by orienting every edge according to increasing coordinate direction. Let  $p_c(\rho)$  be the critical value of  $p$  for given  $\rho$ . They proved that

$$d^{1/\rho} p_c(\rho) \rightarrow \frac{\theta^{1/\rho}}{e^\theta - 1} \quad \text{as } d \rightarrow \infty,$$

where  $\theta = \theta(\rho)$  is the unique solution of a certain given equation. This further example of Harry's interest in the large- $d$  behaviour of interacting systems is complemented by [K107] on the Ising model, [K110] on Potts and Heisenberg models, [K112] on percolation, and [K118] on the random-cluster model.

#### *Uniform spanning forest*

A *uniform spanning tree* (UST) in a finite connected graph is a spanning tree chosen uniformly at random from the set of all such trees. A *uniform spanning forest* (USF) in  $\mathbb{Z}^d$  is defined as the weak limit of USTs on larger and larger boxes (see Figure 7.3). Pemantle [104] proved that USF is a.s. connected if and only if  $d \leq 4$ . The surprising fact was discovered by Benjamini, Kesten, Peres, and Schramm [K174] that further transitions take place as  $d$  passes through the multiples of 4. Suppose each tree in the USF is shrunk to a single vertex, and consider the graph  $C$  thus obtained. They showed that the diameter of  $C$  increases by 1 every time the dimension increases by 4. This unusual conclusion has been extended further by Hutchcroft and Peres [82] in their proof that the USF with  $d \geq 4$  undergoes a qualitative change to its connectivity *every time* the dimension increases.

*Minimal spanning tree*

Drop  $n$  points  $X_1, X_2, \dots, X_n$  uniformly at random into the unit cube  $[0, 1]^d$ , where  $d \geq 2$ . Beardwood, Halton, and Hammersley [13] initiated the study of graphical objects with vertex set  $\{X_i\}$ , in their study (using subadditivity) of the length of the shortest travelling salesman path. Aldous and Steele [3, 115] asked about the minimal spanning tree on  $\{X_i\}$ , and proved that its  $\alpha$ -length  $M_{n,\alpha}$  (with an edge of length  $l$  contributing length  $l^\alpha$  for  $\alpha \in (0, 2]$ ) is asymptotic to  $n^{(d-\alpha)/d}$ . Kesten and Lee [K146] proved a central limit theorem for this  $M_{n,\alpha}$  by expressing it as a sum of martingale differences. Bounds on the rate of convergence in this last limit were established recently by Chatterjee and Sen [31] using Stein's method.

**8 Further work**

## 8.1 Probabilistic Diophantine approximation

Harry wrote several works related to Diophantine approximation, frequently using probabilistic notation and methodology. His first and only paper [K8] with Kac addressed a central limit theorem for the number of appearances of a specified digit in the continued fraction expansion of a 'typical' number. This was achieved in the general context of the partial sums of a rapidly mixing sequence of iterates of a measure-preserving map. The authors noted in an addendum that their results for continued fractions had been obtained earlier by Doeblin [44] in 1940.

Let  $x, y \in [0, 1]$ , and let  $0 \leq a \leq b \leq 1$ . Define

$$S_n(x, y) = \sum_{k=1}^n 1(\{y + kx\} \in [a, b]),$$

where  $1(A)$  is the indicator function of  $A$  and  $\{z\} = z - \lfloor z \rfloor$  is the fractional part of  $z$ . Weyl [121] proved that  $S_n(x, 0)/n \rightarrow b - a$  as  $n \rightarrow \infty$ , for irrational  $x$ . In [K14, K18], Harry established a fluctuation theory of  $S_n(X, Y)$ , where  $X$  and  $Y$  are uniformly distributed on  $[0, 1]$ , namely that

$$\frac{1}{\log n} [S_n(X, Y) - n(b - a)] \Rightarrow Z/\rho,$$

where  $Z$  has the Cauchy distribution, and  $\rho$  depends on  $b - a$  and is constant for irrational  $b - a$ . This work was extended in [K29] to an iterated logarithm law. It is complemented in [K35, K36] by a proof of a conjecture of Erdős and Szűsz that  $S_n(x, 0) - n(b - a)$  is bounded in  $n$  if and only if  $b - a = \{jx\}$  for some integer  $j$ . This last result has motivated the study of so-called bounded remainder sets (see [46]).

In a related work [K19], Ciesielski and Kesten considered the process

$$X_n(t) = \frac{1}{\sqrt{n}} \sum_{k=0}^{n-1} [1(\{2^k X\} \leq t) - t], \quad t \in [0, 1],$$

where  $X$  is uniformly distributed on  $[0, 1]$ . They answered a question of Kac with their proof via an invariance principle that

$$\lim_{n \rightarrow \infty} \mathbb{P} \left( \sup_{t \in [0, 1]} |X_n(t)| < u \right) = \mathbb{P} \left( \sup_{t \in [0, 1]} |X(t)| < u \right), \quad u \in [0, 1],$$

where  $X$  is the Gaussian process that is the weak limit  $\lim_{n \rightarrow \infty} X_n$ .

Let  $\langle x \rangle$  denote the distance from  $x$  to its closest integer. In an extension [K21] of work of Friedman and Niven [57] and Erdős, Szüsz, and Turán [52, 53], Harry showed three theorems, including that, if  $X$  is uniformly distributed on  $[0, 1]$ , then  $m \cdot \min\{\langle kX \rangle : 1 \leq k \leq m\}$  converges in distribution as  $m \rightarrow \infty$ . Recent developments of Athreya and Ghosh may be found in [7].

## 8.2 Random growth

First-passage percolation is an example of a random growth model, and there are many others, including the classic Eden model [51]. Kesten and Schonmann [K141] explored a variant of the Eden model, proving an asymptotic growth rate and shape.

Kesten and Sidoravicius [K173, K178, K180, K184, K185] studied a population model on  $\mathbb{Z}^d$  with two types of particle. Type-A particles move as independent random walks in continuous time with rate  $D_A$ , and type-B particles behave similarly at rate  $D_B$ . When a type-B particle meets a type-A particle, the latter changes its type to B instantaneously. The problem was to prove a shape theorem for the spread of type-B particles. This process has been called the *frog model* in the special case  $D_A = 0$ . Recent work on a continuum variant of this problem includes [14, 68].

## 8.3 Population genetics

Inspired by a lecture course given by Kingman in 1979, Harry dabbled briefly in population genetics, with work on the so-called Ohta–Kimura model for the evolution of allelic frequencies in a certain finite (but large) population. Each generation has a fixed size  $N$ , from which a random sample of size  $n$  is taken. Let  $A(n, N, t)$  be the number of distinguishable alleles present in such a sample from generation  $t$ , and let  $A(n, N)$  be the weak limit of  $A(n, N, t)$  as  $t \rightarrow \infty$  (this limit exists by a result of Kingman [89]). Kimura and Ohta’s analysis suggested that  $\mathbb{E}A(n, N)$  remains bounded as  $N \rightarrow \infty$ , whereas Moran showed heuristically that  $A(n, N) \rightarrow \infty$ . It turned out that, in a fashion, both were correct.

Let  $\gamma_k$  denote tetration (or the power tower) of height  $k$ ,  $\gamma_k := e^{e^{\cdot^{\cdot^e}}}$ , and let  $\lambda(n) = \max\{k : \gamma_k \leq n\}$  denote its inverse. Harry showed in [K71, K72] that, in the limit as  $n, N \rightarrow \infty$  with  $n \leq N$ ,  $A(n, N)/\lambda(n)$  converges in probability to an explicit limit. He pointed out that, for all practical purposes,  $A(n, N)$  remains bounded, and he illustrated this with the observation that, for  $3814280 \leq N \leq 10^{1656520}$ , we have  $\lambda(N) = 3$ . After lecturing on this at Stanford University, he commented on the evident mystification of the biologists present, and on Karlin’s expression of satisfaction at having predicted the boundedness of  $A(n, N)$ .



#### 8.4 Quasi-stationary distributions of Markov chains

Let  $X$  be a discrete-time Markov chain with an absorbing state labelled 0. What can be said about  $X_n$  conditional on  $X_n \neq 0$ ? This classical question has led to a theory of so-called quasi-stationary distributions (qsd). Harry, in combinations with Ferrari, Martínez, and Picco, proved several fundamental results concerning qsd. They proved in [K137] that, subject to a certain condition, a qsd exists if and only if the time to absorption has an exponentially-decaying tail. The required condition fails for an important class of Markov chains arising from spatially distributed interacting particle systems including the (discrete-time) subcritical contact model on  $\mathbb{Z}^d$ . This was rectified in the significant work [K143], with a study based around the property of so-called  $R$ -positive-recurrence. On his way to these results, Harry [K144] revisited the topic of ratio limit theorems, with proofs that ratio limits exist for Markov chains on the non-negative integers with an absorbing state 0, conditional on not yet being absorbed.

#### 8.5 Annihilating and coalescing random walks

Interacting random walks of these two types have been studied since the 1970s as duals to the antivoter and voter models of interacting particle systems. In a model first studied by van den Berg and Kesten [K162], particles are placed at each vertex of  $\mathbb{Z}^d$ , and each moves in the manner of a Markov chain. When a particle jumps to a vertex already occupied by  $j$  particles, it is removed with some given probability  $q_j$ . Let  $p(t)$  be the mean density of occupied vertices at time  $t$ . The authors showed that  $p(t) \sim C/t$  if  $d \geq 6$ . Subject to an extra condition, this was extended in [K171] to  $d \geq 3$ .

This project was continued by Harry in [K159] with a proof that  $p(t) \sim C/t$  when  $d \geq 9$  for similar models in which the annihilation/coalescence can take place within the set of neighbours of the moving particle.

In one of Harry's final papers, he returned with Benjamini, Foxall, Gurel-Gurevich, and Junge [K194] to coalescing random walks, this time in the context of a connected, locally finite graph  $G$ . They asked when such walks are 'site recurrent' in that every site is a.s. visited infinitely often. Site recurrence is equivalent to  $\int_0^\infty p_v(t) dt = \infty$  for all vertices  $v$ , where  $p_v(t)$  is the probability that  $v$  is occupied at time  $t$ . They showed that  $p_v(t) \geq C/(1+t)$  when  $G$  has bounded degree, and  $p_v(t) \geq C/(t \log t)$  when  $G$  is a branching process whose family-sizes have an exponentially decaying tail, thereby verifying site recurrence in both cases.

#### Acknowledgements

The author thanks Jean Bertoin, Rick Durrett, and Ross Maller for their helpful comments on this article, and he gratefully acknowledges the thoughtful and detailed report of an anonymous referee.

## References

1. M. Aizenman, F. Delyon, and B. Souillard. Lower bounds on the cluster size distribution. *J. Statist. Phys.*, 23(3):267–280, 1980.
2. K. Albertsen. The extinction of families. *Internat. Statist. Rev.*, 63:234–239, 1995.
3. D. Aldous and J. M. Steele. Asymptotics for Euclidean minimal spanning trees on random points. *Probab. Theory Related Fields*, 92(2):247–258, 1992.
4. K. Alexander, J. T. Chayes, and L. Chayes. The Wulff construction and asymptotics of the finite cluster distribution for two-dimensional Bernoulli percolation. *Comm. Math. Phys.*, 131(1):1–50, 1990.
5. S. Alexander and R. Orbach. Density of states on fractals: “fractons”. *J. Phys. (Paris) Lett.*, 43:625–631, 1982.
6. S. Andres, M. T. Barlow, J.-D. Deuschel, and B. M. Hambly. Invariance principle for the random conductance model. *Probab. Theory Related Fields*, 156(3-4):535–580, 2013.
7. J. S. Athreya and A. Ghosh. The Erdős–Szűsz–Turán distribution for equivariant processes. *Enseign. Math.*, 64(1-2):1–21, 2018.
8. A. Auffinger, M. Damron, and J. Hanson. Rate of convergence of the mean for sub-additive ergodic sequences. *Adv. Math.*, 285:138–181, 2015.
9. A. Auffinger, M. Damron, and J. Hanson. *50 years of first-passage percolation*, volume 68 of *University Lecture Series*. American Mathematical Society, Providence, RI, 2017.
10. M. T. Barlow. Random walks on supercritical percolation clusters. *Ann. Probab.*, 32(4):3024–3084, 2004.
11. R. Basu, V. Sidoravicius, and A. Sly. Lipschitz embeddings of random fields. *Probab. Theory Related Fields*, 172(3-4):1121–1179, 2018.
12. R. Basu and A. Sly. Lipschitz embeddings of random sequences. *Probab. Theory Related Fields*, 159(3-4):721–775, 2014.
13. J. Beardwood, J. H. Halton, and J. M. Hammersley. The shortest path through many points. *Proc. Cambridge Philos. Soc.*, 55:299–327, 1959.
14. E. Beckman, E. Dinan, R. Durrett, R. Huo, and M. Junge. Asymptotic behavior of the Brownian frog model. *Electron. J. Probab.*, 23:Paper No. 104, 19 pp, 2018.
15. R. Bellman. Limit theorems for non-commutative operations. I. *Duke Math. J.*, 21:491–500, 1954.
16. J. van den Berg and J. Jonasson. A BK inequality for randomly drawn subsets of fixed size. *Probab. Theory Related Fields*, 154(3-4):835–844, 2012.
17. J. van den Berg, D. Kiss, and P. Nolin. Two-dimensional volume-frozen percolation: deconcentration and prevalence of mesoscopic clusters. *Ann. Sci. Ecol. Norm. Sup.*, 51(4):1017–1084, 2018.
18. J. Bertoin. *Lévy processes*, volume 121 of *Cambridge Tracts in Mathematics*. Cambridge University Press, Cambridge, 1996.
19. M. Bramson and R. Durrett, editors. *Perplexing problems in probability*, volume 44 of *Progress in Probability*. Birkhäuser Boston, Boston, MA, 1999.
20. J. Bretagnolle. Résultats de Kesten sur les processus à accroissements indépendants. In *Séminaire de Probabilités, V*, volume 191 of *Lecture Notes in Mathematics*, pages 21–36. Springer, Berlin, 1971.
21. J. Bricmont and A. Kupiainen. Random walks in asymmetric random envi-

- ronments. *Comm. Math. Phys.*, 142(2):345–420, 1991.
22. S. R. Broadbent and J. M. Hammersley. Percolation processes. I. Crystals and mazes. *Proc. Cambridge Philos. Soc.*, 53:629–641, 1957.
  23. D. Buraczewski, E. Damek, and T. Mikosch. *Stochastic models with power-law tails. The equation  $X = AX + B$* . Springer Series in Operations Research and Financial Engineering. Springer, Cham, 2016.
  24. R. M. Burton and M. Keane. Density and uniqueness in percolation. *Comm. Math. Phys.*, 121:501–505, 1989.
  25. F. Camia and C. M. Newman. Two-dimensional critical percolation: the full scaling limit. *Comm. Math. Phys.*, 268(1):1–38, 2006.
  26. R. Cerf. *Large deviations for three dimensional supercritical percolation*, volume 267 of *Astérisque*. Société Math. de France, 2000.
  27. R. Cerf. *The Wulff crystal in Ising and percolation models*, volume 1878 of *Lecture Notes in Mathematics*. Springer, Berlin, 2006. Lectures from the 34th Summer School on Probability Theory held in Saint-Flour, 2004.
  28. R. Cerf. A lower bound on the two-arms exponent for critical percolation on the lattice. *Ann. Probab.*, 43:2458–2480, 2015.
  29. R. Cerf and M. Théret. Lower large deviations for the maximal flow through a domain of  $\mathbb{R}^d$  in first passage percolation. *Probab. Theory Related Fields*, 150(3-4):635–661, 2011.
  30. S. Chatterjee. The universal relation between scaling exponents in first-passage percolation. *Ann. Math.*, 177(2):663–697, 2013.
  31. S. Chatterjee and S. Sen. Minimal spanning trees and Stein's method. *Ann. Appl. Probab.*, 27(3):1588–1645, 2017.
  32. Y. Chow and Y. Zhang. Large deviations in first-passage percolation. *Ann. Appl. Probab.*, 13(4):1601–1614, 2003.
  33. K. L. Chung and M. Kac. Remarks on fluctuations of sums of independent random variables. *Mem. Amer. Math. Soc.*, No. 6:1–11, 1951. Corrections: *Proc. Amer. Math. Soc.* 4 (1953), 560–563.
  34. A. Collecchio, D. Kious, and V. Sidoravicius. The branching-ruin number and the critical parameter of once-reinforced random walk on trees. *Comm. Pure Appl. Math.*, 73(1):210–236, 2020.
  35. M. Cranston, D. Gauthier, and T. S. Mountford. On large deviation regimes for random media models. *Ann. Appl. Probab.*, 19(2):826–862, 2009.
  36. M. Damron. Random growth models: shape and convergence rate. In *Random growth models*, volume 75 of *Proc. Sympos. Appl. Math.*, pages 1–37. Amer. Math. Soc., Providence, RI, 2018.
  37. M. Damron, J. Hanson, and P. Sosoe. Sublinear variance in first-passage percolation for general distributions. *Probab. Theory Related Fields*, 163(1-2):223–258, 2015.
  38. M. Damron, W.-K. Lam, and X. Wang. Asymptotics for 2D critical first passage percolation. *Ann. Probab.*, 45(5):2941–2970, 2017.
  39. M. Damron, A. Sapozhnikov, and B. Vágvölgyi. Relations between invasion percolation and critical percolation in two dimensions. *Ann. Probab.*, 37(6):2297–2331, 2009.
  40. D. A. Darling and M. Kac. On occupation times for Markoff processes. *Trans. Amer. Math. Soc.*, 84:444–458, 1957.
  41. B. Davis. Reinforced random walk. *Probab. Theory Related Fields*, 84(2):203–229, 1990.

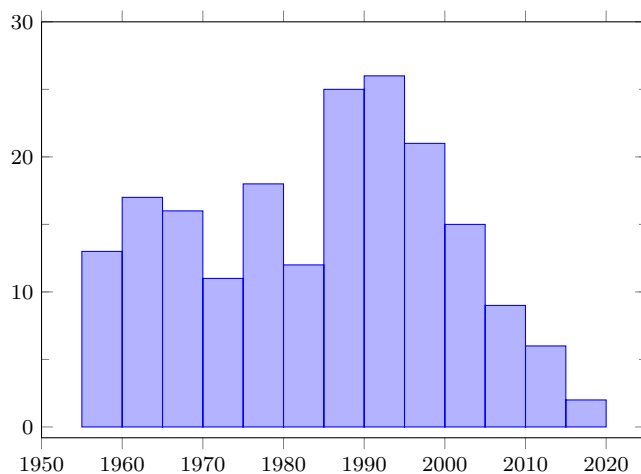
42. P. G. de Gennes. La percolation: Un concept unificateur. *La Recherche*, 7:919–927, 1976.
43. F. M. Dekking. On the probability of occurrence of labelled subtrees of a randomly labelled tree. *Theoret. Comput. Sci.*, 65(2):149–152, 1989.
44. W. Doeblin. Remarques sur la théorie métrique des fractions continues. *Compositio Math.*, 7:353–371, 1940.
45. R. A. Doney. *Fluctuation theory for Lévy processes*, volume 1897 of *Lecture Notes in Mathematics*. Springer, Berlin, 2007. Lectures from the 35th Saint-Flour Summer School.
46. M. Drmota and R. F. Tichy. *Sequences, discrepancies and applications*, volume 1651 of *Lecture Notes in Mathematics*. Springer, Berlin, 1997.
47. H. Duminil-Copin, S. Ganguly, A. Hammond, and I. Manolescu. Bounding the number of self-avoiding walks: Hammersley–Welsh with polygon insertion. *Ann. Probab.*, 48:1644–1692, 2020.
48. H. Duminil-Copin, J.-H. Li, and I. Manolescu. Universality for the random-cluster model on isoradial graphs. *Electron. J. Probab.*, 23:Paper no. 96, 70 pp, 2018.
49. H. Duminil-Copin and S. Smirnov. The connective constant of the honeycomb lattice equals  $\sqrt{2 + \sqrt{2}}$ . *Ann. Math.*, 175(3):1653–1665, 2012.
50. R. Durrett. Harry Kesten’s publications: a personal perspective. In *Perplexing Problems in Probability*, volume 44 of *Progr. Probab.*, pages 1–33. Birkhäuser, Boston, MA, 1999.
51. M. Eden. A two-dimensional growth process. In *Proc. 4th Berkeley Sympos. Math. Statist. and Prob.*, volume IV, pages 223–239. Univ. California Press, Berkeley, Calif., 1961.
52. P. Erdős. Problems and results on diophantine approximations. *Compositio Math.*, 16:52–65 (1964), 1964.
53. P. Erdős, P. Szűsz, and P. Turán. Remarks on the theory of diophantine approximation. *Colloq. Math.*, 6:119–126, 1958.
54. K. B. Erickson. Recurrence sets of normed random walk in  $R^d$ . *Ann. Probab.*, 4(5):802–828, 1976.
55. R. Fitzner and R. van der Hofstad. Mean-field behavior for nearest-neighbor percolation in  $d > 10$ . *Electron. J. Probab.*, 22:Paper no. 43, 65 pp, 2017.
56. P. Flory. *Principles of Polymer Chemistry*. Cornell University Press, Ithaca, NY, 1953.
57. B. Friedman and I. Niven. The average first recurrence time. *Trans. Amer. Math. Soc.*, 92:25–34, 1959.
58. C. Garban, G. Pete, and O. Schramm. The scaling limits of near-critical and dynamical percolation. *J. Eur. Math. Soc.*, 20(5):1195–1268, 2018.
59. O. Garet, R. Marchand, E. B. Procaccia, and Marie Thérét. Continuity of the time and isoperimetric constants in supercritical percolation. *Electron. J. Probab.*, 22:Paper no. 78, 35 pp, 2017.
60. A. Georgakopoulos and C. Panagiotis. Analyticity of the percolation density  $\theta$  in all dimensions. 2020. <https://arxiv.org/abs/2001.09178>.
61. A. O. Golosov. On limiting distribution for a random walk in a critical one-dimensional random environment. *Russian Math. Surveys*, 41:199–200, 1986.
62. G. R. Grimmett. *Percolation*, volume 321 of *Grundlehren der Mathematischen Wissenschaften*. Springer, Berlin, second edition, 1999.

63. G. R. Grimmett. *Probability on graphs*. Cambridge University Press, Cambridge, 2nd edition, 2018.
64. G. R. Grimmett and A. E. Holroyd. Geometry of Lipschitz percolation. *Ann. Inst. Henri Poincaré Probab. Stat.*, 48(2):309–326, 2012.
65. G. R. Grimmett and A. E. Holroyd. Lattice embeddings in percolation. *Ann. Probab.*, 40(1):146–161, 2012.
66. G. R. Grimmett, M. Keane, and J. M. Marstrand. On the connectedness of a random graph. *Math. Proc. Cambridge Philos. Soc.*, 96(1):151–166, 1984.
67. G. R. Grimmett and G. F. Lawler. Harry Kesten (1931–2019), a personal and scientific tribute. *Notices of the Amer. Math. Soc.*, 67:822–831, 2020.
68. G. R. Grimmett and Z. Li. Brownian snails with removal: pandemics in diffusing populations. 2020. <https://arxiv.org/abs/2009.02495>.
69. G. R. Grimmett and I. Manolescu. Bond percolation on isoradial graphs: criticality and universality. *Probab. Theory Related Fields*, 159(1-2):273–327, 2014.
70. G. R. Grimmett and J. M. Marstrand. The supercritical phase of percolation is well behaved. *Proc. Roy. Soc. London Ser. A*, 430(1879):439–457, 1990.
71. G. R. Grimmett and D. J. A. Welsh. Obituary: John Michael Hammersley, FRS, 1920–2004. *Bull. Lond. Math. Soc.*, 41(6):1125–1143, 2009.
72. Y. Guivarc’h. Marches aléatoires sur les groupes. In *Development of mathematics 1950–2000*, pages 577–608. Birkhäuser, Basel, 2000.
73. J. M. Hammersley and K. W. Morton. Poor man’s Monte Carlo. *J. Roy. Statist. Soc. Ser. B*, 16:23–38; discussion 61–75, 1954.
74. J. M. Hammersley and D. J. A. Welsh. Further results on the rate of convergence to the connective constant of the hypercubical lattice. *Quart. J. Math. Oxford Ser. (2)*, 13:108–110, 1962.
75. J. M. Hammersley and D. J. A. Welsh. First-passage percolation, subadditive processes, stochastic networks, and generalized renewal theory. In *Proc. Internat. Res. Semin., Statist. Lab., Univ. California, Berkeley, Calif*, pages 61–110. Springer, New York, 1965.
76. T. Hara and G. Slade. Mean-field critical behaviour for percolation in high dimensions. *Comm. Math. Phys.*, 128(2):333–391, 1990.
77. T. Hara and G. Slade. The lace expansion for self-avoiding walk in five or more dimensions. *Rev. Math. Phys.*, 4(2):235–327, 1992.
78. T. Hara and G. Slade. Self-avoiding walk in five or more dimensions. I. The critical behaviour. *Comm. Math. Phys.*, 147(1):101–136, 1992.
79. T. E. Harris. A lower bound for the critical probability in a certain percolation process. *Proc. Cambridge Philos. Soc.*, 56:13–20, 1960.
80. T. E. Harris. *The theory of branching Processes*, volume 119 of *Grundlehren der Mathematischen Wissenschaften*. Springer, Berlin, 1963.
81. M. Heydenreich and R. van der Hofstad. *Progress in high-dimensional percolation and random graphs*. CRM Short Courses. Springer, Cham; CRM, Montreal, 2017.
82. T. Hutchcroft and Y. Peres. The component graph of the uniform spanning forest: transitions in dimensions 9, 10, 11,  $\dots$ . *Probab. Theory Related Fields*, 175(1-2):141–208, 2019.
83. M. Kac. Sur les fonctions indépendantes (I): Propriétés générales. *Studia Math.*, 6:46–58, 1936.
84. M. Kac. *Statistical independence in probability, analysis and number theory*.

- The Carus Mathematical Monographs, No. 12. Mathematical Association of America, John Wiley and Sons, Inc., New York, 1959.
85. J. Kahn, G. Kalai, and N. Linial. The influence of variables on Boolean functions. In *Proceedings of 29th Symposium on the Foundations of Computer Science*, pages 68–80. Computer Science Press, 1988.
  86. S. Kalikow and B. Weiss. When are random graphs connected. *Israel J. Math.*, 62(3):257–268, 1988.
  87. P. W. Kasteleyn. Random walks through a stochastic landscape. *Bull. Inst. Internat. Statist.*, 51(4):No. 27.1, 13 pp.; Vol. V: pp. 193–198, 1985. Proceedings of the 45th session of the International Statistical Institute, Vol. 4 (Amsterdam, 1985).
  88. M. Keane and W. Th. F. den Hollander. Ergodic properties of color records. *Phys. A*, 138(1-2):183–193, 1986.
  89. J. F. C. Kingman. Coherent random walks arising in some genetical models. *Proc. Roy. Soc. London Ser. A*, 351(1664):19–31, 1976.
  90. A. N. Kolmogorov. Zur Lösung einer biologischen Aufgabe. *Commun. Math. Mech. Chebyshev, Univ. Tomsk*, 2:1–6, 1938.
  91. G. Kozma and A. Nachmias. The Alexander–Orbach conjecture holds in high dimensions. *Invent. Math.*, 178(3):635–654, 2009.
  92. A. E. Kyprianou. *Fluctuations of Lévy processes with applications*. Universitext. Springer, Heidelberg, 2nd edition, 2014.
  93. G. F. Lawler. *Intersections of random walks*. Modern Birkhäuser Classics. Birkhäuser/Springer, New York, 2013. Reprint of the 1996 edition.
  94. G. F. Lawler and V. Limic. *Random walk: a modern introduction*, volume 123 of *Cambridge Studies in Advanced Mathematics*. Cambridge University Press, Cambridge, 2010.
  95. N. Levinson. Limiting theorems for Galton–Watson branching process. *Illinois J. Math.*, 3:554–565, 1959.
  96. R. Lyons, R. Pemantle, and Y. Peres. Conceptual proofs of  $L \log L$  criteria for mean behavior of branching processes. *Ann. Probab.*, 23(3):1125–1138, 1995.
  97. N. Madras and G. Slade. *The self-avoiding walk*. Probability and its Applications. Birkhäuser, Boston, MA, 1993.
  98. H. Matzinger, A. Pachon, and S. Popov. Reconstruction of a multidimensional scenery with a branching random walk. *Ann. Appl. Probab.*, 27(2):651–685, 2017.
  99. M. V. Menshikov and S. A. Zuev. Models of  $\rho$ -percolation. In *Probabilistic methods in discrete mathematics (Petrozavodsk, 1992)*, volume 1 of *Progr. Pure Appl. Discrete Math.*, pages 337–347. VSP, Utrecht, 1993.
  100. P. Nolin. Near-critical percolation in two dimensions. *Electron. J. Probab.*, 13:no. 55, 1562–1623, 2008.
  101. P. Nolin, V. Tassion, and A. Teixeira. No exceptional words for Bernoulli percolation. 2019. <https://arxiv.org/abs/1911.04816>.
  102. W. J. C. Orr. Statistical treatment of polymer solutions at infinite dilution. *Trans. Faraday Soc.*, 43:12–27, 1947.
  103. V. I. Oseledec. A multiplicative ergodic theorem. Characteristic Ljapunov, exponents of dynamical systems. *Trudy Moskov. Mat. Obšč.*, 19:179–210, 1968.
  104. R. Pemantle. Choosing a spanning tree for the integer lattice uniformly. *Ann. Probab.*, 19(4):1559–1574, 1991.
  105. D. Reimer. Proof of the van den Berg–Kesten conjecture. *Combin. Probab.*

- Comput.*, 9(1):27–32, 2000.
106. R. Rossignol and M. Théret. Lower large deviations and laws of large numbers for maximal flows through a box in first passage percolation. *Ann. Inst. Henri Poincaré Probab. Stat.*, 46(4):1093–1131, 2010.
  107. L. Saloff-Coste. Random walks on finite groups. In *Probability on discrete structures*, volume 110 of *Encyclopaedia Math. Sci.*, pages 263–346. Springer, Berlin, 2004.
  108. O. Schramm. Scaling limits of loop-erased random walks and uniform spanning trees. *Israel J. Math.*, 118:221–288, 2000.
  109. O. Schramm. *Selected works of Oded Schramm. Volume 1, 2.* Selected Works in Probability and Statistics. Springer, New York, 2011. eds. I. Benjamini and O. Häggström.
  110. L. A. Shepp. Connectedness of certain random graphs. *Israel J. Math.*, 67(1):23–33, 1989.
  111. Ya. G. Sinai. The limit behavior of a one-dimensional random walk in a random environment. *Teor. Veroyatnost. i Primenen.*, 27(2):247–258, 1982. *Theory Prob. Appl.* 27 (1982) 256–268.
  112. S. Smirnov. Critical percolation in the plane: conformal invariance, Cardy's formula, scaling limits. *C. R. Acad. Sci. Paris Sér. I Math.*, 333(3):239–244, 2001.
  113. F. L. Spitzer. *Principles of random walk.* Van Nostrand, Princeton NJ, 1964.
  114. F. L. Spitzer and C. J. Stone. A class of Toeplitz forms and their application to probability theory. *Illinois J. Math.*, 4:253–277, 1960.
  115. J. M. Steele. Growth rates of Euclidean minimal spanning trees with power weighted edges. *Ann. Probab.*, 16(4):1767–1787, 1988.
  116. A.-S. Sznitman. Random motions in random media. In *Mathematical statistical physics*, pages 219–242. Elsevier B. V., Amsterdam, 2006.
  117. M. Talagrand. On Russo's approximate zero-one law. *Ann. Probab.*, 22(3):1576–1587, 1994.
  118. N. Th. Varopoulos. Théorie du potentiel sur des groupes et des variétés. *C. R. Acad. Sci. Paris Sér. I Math.*, 302(6):203–205, 1986.
  119. T. Vicsek. *Fractal growth phenomena.* World Scientific Publishing Co., Teaneck, NJ, 1989.
  120. W. Werner. Lectures on two-dimensional critical percolation. In S. Sheffield and T. Spencer, editors, *Statistical mechanics*, volume 16 of *IAS/Park City Mathematics Series*, pages 297–360. AMS, Providence, RI; IAS, Princeton, NJ, 2009.
  121. H. Weyl. Über die Gleichverteilung von Zahlen mod. Eins. *Math. Ann.*, 77(3):313–352, 1916.
  122. T. A. Witten and L. M. Sander. Diffusion-limited aggregation, a kinetic critical phenomenon. *Physical Review Letters*, 47:1400–1403, 1981.
  123. W. Woess. *Random walks on infinite graphs and groups*, volume 138 of *Cambridge Tracts in Mathematics.* Cambridge University Press, Cambridge, 2000.
  124. A. M. Yaglom. Certain limit theorems of the theory of branching random processes. *Doklady Akad. Nauk SSSR (N.S.)*, 56:795–798, 1947.
  125. Y. Zhang. Limit theorems for maximum flows on a lattice. *Probab. Theory Related Fields*, 171(1-2):149–202, 2018.

### Publications of Harry Kesten



A histogram of Harry Kesten's publications in five-year blocks from 1956 to 2020.

1956

- K1. H. Kesten and J. T. Runnenburg. Some remarks on the calculation of the expectation and the spread of the number of inconsistencies in a fixed rank correlation scheme. *Statistica Neerlandica*, 10:197–204, 1956.
- K2. H. Kesten and J. T. Runnenburg. *Priority in waiting line problems*. Statist. Afdeling Rep. S 211 (VP 11). Math. Centrum Amsterdam., 1956. 26 pp.
- K3. H. Kesten and J. T. Runnenburg. *Some elementary proofs in renewal theory with applications to waiting times*. Afdeling Rep. S 203. Math. Centrum Amsterdam. Statist., 1956. 16 pp.

1957

- K4. H. Kesten and J. T. Runnenburg. Priority in waiting line problems. I. *Nederl. Akad. Wetensch. Proc. Ser. A. 60 = Indag. Math.*, 19:312–324, 1957.
- K5. H. Kesten and J. T. Runnenburg. Priority in waiting line problems. II. *Nederl. Akad. Wetensch. Proc. Ser. A. 60 = Indag. Math.*, 19:325–336, 1957.

1958

- K6. H. Kesten. Accelerated stochastic approximation. *Ann. Math. Statist.*, 29:41–59, 1958.
- K7. H. Kesten. *Symmetric random walk on groups*. ProQuest LLC, Ann Arbor, MI, 1958. PhD Thesis, Cornell University.

1959

- K8. M. Kac and H. Kesten. On rapidly mixing transformations and an application to continued fractions. *Bull. Amer. Math. Soc.*, 64:283–287, 1958. Correction in Volume 65 (1959), page 67.



- K9. H. Kesten. Full Banach mean values on countable groups. *Math. Scand.*, 7:146–156, 1959.
- K10. H. Kesten. On a series of cosecants. II. *Nederl. Akad. Wetensch. Proc. Ser. A 62 = Indag. Math.*, 21:110–119, 1959.
- K11. H. Kesten. Symmetric random walks on groups. *Trans. Amer. Math. Soc.*, 92:336–354, 1959.
- K12. H. Kesten and N. Morse. A property of the multinomial distribution. *Ann. Math. Statist.*, 30:120–127, 1959.
- 1960
- K13. H. Furstenberg and H. Kesten. Products of random matrices. *Ann. Math. Statist.*, 31:457–469, 1960.
- K14. H. Kesten. Uniform distribution mod 1. *Ann. of Math. (2)*, 71:445–471, 1960.
- 1961
- K15. H. Kesten. On a theorem of Spitzer and Stone and random walks with absorbing barriers. *Illinois J. Math.*, 5:246–266, 1961.
- K16. H. Kesten. Random walks with absorbing barriers and Toeplitz forms. *Illinois J. Math.*, 5:267–290, 1961.
- K17. H. Kesten. Some remarks on the capacity of compound channels in the semicontinuous case. *Information and Control*, 4:169–184, 1961.
- K18. H. Kesten. Uniform distribution mod 1. II. *Acta Arith.*, 7:355–380, 1961/1962.
- 1962
- K19. Z. Ciesielski and H. Kesten. A limit theorem for the fractional parts of the sequence  $\{2^k t\}$ . *Proc. Amer. Math. Soc.*, 13:596–600, 1962.
- K20. H. Kesten. Occupation times for Markov and semi-Markov chains. *Trans. Amer. Math. Soc.*, 103:82–112, 1962.
- K21. H. Kesten. Some probabilistic theorems on Diophantine approximations. *Trans. Amer. Math. Soc.*, 103:189–217, 1962.
- K22. H. Kesten, D. Ornstein, and F. Spitzer. A general property of random walk. *Bull. Amer. Math. Soc.*, 68:526–528, 1962.
- K23. H. Kesten. On the extreme eigenvalues of translation kernels and Toeplitz matrices. *J. Analyse Math.*, 10:117–138, 1962/63.
- 1963
- K24. H. Kesten. On the number of self-avoiding walks. *J. Mathematical Phys.*, 4:960–969, 1963.
- K25. H. Kesten. Positivity intervals of stable processes. *J. Math. Mech.*, 12:391–410, 1963.
- K26. H. Kesten. Ratio theorems for random walks. II. *J. Analyse Math.*, 11:323–379, 1963.
- K27. H. Kesten and F. Spitzer. Ratio theorems for random walks. I. *J. Analyse Math.*, 11:285–322, 1963.
- 1964
- K28. H. Kesten. On the number of self-avoiding walks. II. *J. Mathematical Phys.*, 5:1128–1137, 1964.
- K29. H. Kesten. The discrepancy of random sequences  $\{kx\}$ . *Acta Arith.*, 10:183–213, 1964/65.

1965

- K30. H. Kesten. An iterated logarithm law for local time. *Duke Math. J.*, 32:447–456, 1965.
- K31. H. Kesten and F. Spitzer. Random walk on countably infinite Abelian groups. *Acta Math.*, 114:237–265, 1965.

1966

- K32. H. Kesten, P. Ney, and F. Spitzer. The Galton–Watson process with mean one and finite variance. *Teor. Verojatnost. i Primenen.*, 11:579–611, 1966. [*Theory Prob. and Appl.*, 11:513–540, 1966.]
- K33. H. Kesten and B. P. Stigum. Additional limit theorems for indecomposable multidimensional Galton–Watson processes. *Ann. Math. Statist.*, 37:1463–1481, 1966.
- K34. H. Kesten and B. P. Stigum. A limit theorem for multidimensional Galton–Watson processes. *Ann. Math. Statist.*, 37:1211–1223, 1966.
- K35. H. Kesten and V. T. Sós. On two problems of Erdős, Szüsz and Turán concerning diophantine approximations. *Acta Arith.*, 12:183–192, 1966/1967.
- K36. H. Kesten. On a conjecture of Erdős and Szüsz related to uniform distribution mod 1. *Acta Arith.*, 12:193–212, 1966/67.

1967

- K37. H. Kesten. The Martin boundary of recurrent random walks on countable groups. In *Proc. Fifth Berkeley Sympos. Math. Statist. and Probability (Berkeley, Calif., 1965/66)*, volume 2, part 2, pages 51–74. Univ. California Press, Berkeley, Calif., 1967.
- K38. H. Kesten and B. P. Stigum. Limit theorems for decomposable multidimensional Galton–Watson processes. *J. Math. Anal. Appl.*, 17:309–338, 1967.

1968

- K39. H. Kesten. A Tauberian theorem for random walk. *Israel J. Math.*, 6:279–294, 1968.

1969

- K40. H. Kesten. A convolution equation and hitting probabilities of single points for processes with stationary independent increments. *Bull. Amer. Math. Soc.*, 75:573–578, 1969.
- K41. H. Kesten. A sharper form of the Doeblin–Lévy–Kolmogorov–Rogozin inequality for concentration functions. *Math. Scand.*, 25:133–144, 1969.
- K42. H. Kesten. *Hitting probabilities of single points for processes with stationary independent increments*, volume 93 of *Memoirs of the American Mathematical Society*. American Mathematical Society, Providence, R.I., 1969.

1970

- K43. H. Kesten. The limit points of a normalized random walk. *Ann. Math. Statist.*, 41:1173–1205, 1970.
- K44. H. Kesten. Quadratic transformations: A model for population growth. I. *Adv. Appl. Probab.*, 2:1–82, 1970.
- K45. H. Kesten. Quadratic transformations: A model for population growth. II. *Adv. Appl. Probab.*, 2:179–228, 1970.
- K46. H. Kesten. A ratio limit theorem for symmetric random walk. *J. Analyse Math.*, 23:199–213, 1970.

1971

- K47. H. Kesten. Hitting of sets by processes with stationary independent increments. In *Actes du Congrès International des Mathématiciens (Nice, 1970)*, volume 2, pages 525–530, 1971.
- K48. H. Kesten. Some nonlinear stochastic growth models. *Bull. Amer. Math. Soc.*, 77:492–511, 1971.

1972

- K49. R. K. Gettoor and H. Kesten. Continuity of local times for Markov processes. *Compositio Math.*, 24:277–303, 1972.
- K50. H. Kesten. Limit theorems for stochastic growth models. I, II. *Adv. Appl. Probab.*, 4:193–232; *ibid.* 4 (1972), 393–428, 1972.
- K51. H. Kesten. Sums of independent random variables—without moment conditions. *Ann. Math. Statist.*, 43:701–732, 1972.

1973

- K52. H. Kesten. Random difference equations and renewal theory for products of random matrices. *Acta Math.*, 131:207–248, 1973.

1974

- K53. K. B. Erickson and H. Kesten. Strong and weak limit points of a normalized random walk. *Ann. Probab.*, 2:553–579, 1974.
- K54. H. Kesten. Renewal theory for functionals of a Markov chain with general state space. *Ann. Probab.*, 2:355–386, 1974.

1975

- K55. H. Kesten. Sums of stationary sequences cannot grow slower than linearly. *Proc. Amer. Math. Soc.*, 49:205–211, 1975.
- K56. H. Kesten, M. V. Kozlov, and F. Spitzer. A limit law for random walk in a random environment. *Compositio Math.*, 30:145–168, 1975.
- K57. H. Kesten and F. Spitzer. Controlled Markov chains. *Ann. Probab.*, 3:32–40, 1975.

1976

- K58. H. Kesten. Existence and uniqueness of countable one-dimensional Markov random fields. *Ann. Probab.*, 4(4):557–569, 1976.
- K59. H. Kesten. Lévy processes with a nowhere dense range. *Indiana Univ. Math. J.*, 25(1):45–64, 1976.
- K60. H. Kesten. Recurrence criteria for multi-dimensional Markov chains and multi-dimensional linear birth and death processes. *Adv. Appl. Probab.*, 8(1):58–87, 1976.
- K61. H. Kesten and G. L. O'Brien. Examples of mixing sequences. *Duke Math. J.*, 43(2):405–415, 1976.

1977

- K62. H. Kesten. A renewal theorem for random walk in a random environment. In *Probability (Proc. Sympos. Pure Math., Vol. XXXI, Univ. Illinois, Urbana, Ill., 1976)*, pages 67–77, 1977.

1978

- K63. H. Kesten. Branching Brownian motion with absorption. *Stochastic Process. Appl.*, 7(1):9–47, 1978.

K64. H. Kesten. Erickson's conjecture on the rate of escape of  $d$ -dimensional random walk. *Trans. Amer. Math. Soc.*, 240:65–113, 1978.

K65. H. Kesten and G. C. Papanicolaou. A limit theorem for turbulent diffusion. In *Mathematical problems in theoretical physics (Proc. Internat. Conf., Univ. Rome, 1977)*, volume 80 of *Lecture Notes in Phys.*, pages 371–374. Springer, Berlin, 1978.

1979

K66. H. Kesten. Positive harmonic functions with zero boundary values. In *Harmonic analysis in Euclidean spaces (Proc. Sympos. Pure Math., Williams Coll., Williamstown, Mass., 1978)*, Proc. Sympos. Pure Math., XXXV, part 1, pages 349–352. Amer. Math. Soc., Providence, R.I., 1979.

K67. H. Kesten. The speed of convergence of a martingale. *Israel J. Math.*, 32(1):83–96, 1979.

K68. H. Kesten and G. C. Papanicolaou. A limit theorem for turbulent diffusion. *Comm. Math. Phys.*, 65(2):97–128, 1979.

K69. H. Kesten and F. Spitzer. A limit theorem related to a new class of self-similar processes. *Z. Wahrsch. Verw. Gebiete*, 50(1):5–25, 1979.

1980

K70. H. Kesten. The critical probability of bond percolation on the square lattice equals  $\frac{1}{2}$ . *Comm. Math. Phys.*, 74(1):41–59, 1980.

K71. H. Kesten. The number of alleles in electrophoretic experiments. *Theoret. Population Biol.*, 18(2):290–294, 1980.

K72. H. Kesten. The number of distinguishable alleles according to the Ohta–Kimura model of neutral mutation. *J. Math. Biol.*, 10(2):167–187, 1980.

K73. H. Kesten. On the time constant and path length of first-passage percolation. *Adv. in Appl. Probab.*, 12(4):848–863, 1980.

K74. H. Kesten. Random processes in random environments. In *Biological growth and spread (Proc. Conf., Heidelberg, 1979)*, volume 38 of *Lecture Notes in Biomath.*, pages 82–92. Springer, Berlin, 1980.

K75. H. Kesten and G. C. Papanicolaou. A limit theorem for stochastic acceleration. *Comm. Math. Phys.*, 78(1):19–63, 1980/81.

1981

K76. J. T. Cox and H. Kesten. On the continuity of the time constant of first-passage percolation. *J. Appl. Probab.*, 18(4):809–819, 1981.

K77. H. Kesten. Analyticity properties and power law estimates of functions in percolation theory. *J. Statist. Phys.*, 25(4):717–756, 1981.

K78. H. Kesten. Percolation theory for mathematicians. *Nieuw Arch. Wisk.*, 29(3):227–239, 1981.

K79. H. Kesten and Y. Ogura. Recurrence properties of Lotka–Volterra models with random fluctuations. *J. Math. Soc. Japan*, 33(2):335–366, 1981.

1982

K80. H. Kesten. *Percolation theory for mathematicians*, volume 2 of *Progress in Probability and Statistics*. Birkhäuser, Boston, Mass., 1982.

1984

K81. G. Grimmett and H. Kesten. First-passage percolation, network flows and electrical resistances. *Z. Wahrsch. Verw. Gebiete*, 66(3):335–366, 1984.

- K82. G. Grimmett and H. Kesten. Random electrical networks on complete graphs. *J. London Math. Soc. (2)*, 30(1):171–192, 1984.
- K83. K. Kawazu and H. Kesten. On birth and death processes in symmetric random environment. *J. Statist. Phys.*, 37(5-6):561–576, 1984.
- K84. H. Kesten. Percolation theory and resistance of random electrical networks. In *Proceedings of the International Congress of Mathematicians, (Warsaw, 1983)*, volume 2, pages 1081–1088. PWN, Warsaw, 1984.
- K85. H. Kesten and F. Spitzer. Convergence in distribution of products of random matrices. *Z. Wahrsch. Verw. Gebiete*, 67(4):363–386, 1984.

1985

- K86. H. Kesten. First-passage percolation and a higher-dimensional generalization. In *Particle systems, random media and large deviations (Brunswick, Maine, 1984)*, volume 41 of *Contemp. Math.*, pages 235–251. Amer. Math. Soc., Providence, RI, 1985.
- K87. J. van den Berg and H. Kesten. Inequalities with applications to percolation and reliability. *J. Appl. Probab.*, 22(3):556–569, 1985.

1986

- K88. H. Kesten. Aspects of first passage percolation. In *École d'été de probabilités de Saint-Flour, XIV—1984*, volume 1180 of *Lecture Notes in Math.*, pages 125–264. Springer, Berlin, 1986. Reprinted in [K192].
- K89. H. Kesten. *Teoriya prosachivaniya dlya matematikov*. Mir, Moscow, 1986.
- K90. H. Kesten. The incipient infinite cluster in two-dimensional percolation. *Probab. Theory Related Fields*, 73(3):369–394, 1986.
- K91. J. E. Cohen, H. Kesten, and C. M. Newman, editors. *Random matrices and their applications*, volume 50 of *Contemporary Mathematics*. American Mathematical Society, Providence, RI, 1986.
- K92. H. Kesten. The influence of Mark Kac on probability theory. *Ann. Probab.*, 14(4):1103–1128, 1986. Correction in Volume 15 (1987), page 1228.
- K93. H. Kesten. The limit distribution of Sinai's random walk in random environment. *Phys. A*, 138(1-2):299–309, 1986.
- K94. H. Kesten. Subdiffusive behavior of random walk on a random cluster. *Ann. Inst. H. Poincaré Probab. Statist.*, 22(4):425–487, 1986.

1987

- K95. M. Aizenman, H. Kesten, and C. M. Newman. Uniqueness of the infinite cluster and continuity of connectivity functions for short and long range percolation. *Comm. Math. Phys.*, 111(4):505–531, 1987.
- K96. M. Aizenman, H. Kesten, and C. M. Newman. Uniqueness of the infinite cluster and related results in percolation. In *Percolation theory and ergodic theory of infinite particle systems (Minneapolis, Minn., 1984–1985)*, volume 8 of *IMA Vol. Math. Appl.*, pages 13–20. Springer, New York, 1987.
- K97. H. Kesten. Hitting probabilities of random walks on  $\mathbf{Z}^d$ . *Stochastic Process. Appl.*, 25(2):165–184, 1987.
- K98. H. Kesten. How long are the arms in DLA? *J. Phys. A*, 20(1):L29–L33, 1987.
- K99. H. Kesten. Percolation theory and first-passage percolation. *Ann. Probab.*, 15(4):1231–1271, 1987.

- K100. H. Kesten. Random walks on random clusters at criticality. In *Probabilistic methods in mathematical physics (Katata/Kyoto, 1985)*, pages 211–218. Academic Press, Boston, MA, 1987.
- K101. H. Kesten. A scaling relation at criticality for 2D-percolation. In *Percolation theory and ergodic theory of infinite particle systems (Minneapolis, Minn., 1984–1985)*, volume 8 of *IMA Vol. Math. Appl.*, pages 203–212. Springer, New York, 1987.
- K102. H. Kesten. Scaling relations for 2D-percolation. *Comm. Math. Phys.*, 109(1):109–156, 1987.
- K103. H. Kesten. Surfaces with minimal random weights and maximal flows: a higher-dimensional version of first-passage percolation. *Illinois J. Math.*, 31(1):99–166, 1987.
- K104. H. Kesten and Y. Zhang. Strict inequalities for some critical exponents in two-dimensional percolation. *J. Statist. Phys.*, 46(5-6):1031–1055, 1987.

1988

- K105. J. T. Bendler, M. Dishon, H. Kesten, and G. H. Weiss. A first passage time problem for random walk occupancy. *J. Statist. Phys.*, 50(5-6):1069–1087, 1988.
- K106. H. Kesten. Recent progress in rigorous percolation theory. volume 157–158, pages 217–231. 1988. Colloque Paul Lévy sur les Processus Stochastiques (Palaiseau, 1987).

1989

- K107. J. Bricmont, H. Kesten, J. L. Lebowitz, and R. H. Schonmann. A note on the Ising model in high dimensions. *Comm. Math. Phys.*, 122(4):597–607, 1989.
- K108. J. T. Chayes, L. Chayes, G. R. Grimmett, H. Kesten, and R. H. Schonmann. The correlation length for the high-density phase of Bernoulli percolation. *Ann. Probab.*, 17(4):1277–1302, 1989.
- K109. H. Kesten. Supercritical branching processes with countably many types and the size of random Cantor sets. In *Probability, statistics, and mathematics*, pages 103–121. Academic Press, Boston, MA, 1989.
- K110. H. Kesten and R. H. Schonmann. Behavior in large dimensions of the Potts and Heisenberg models. *Rev. Math. Phys.*, 1(2-3):147–182, 1989.

1990

- K111. R. Durrett and H. Kesten. The critical parameter for connectedness of some random graphs. In *A tribute to Paul Erdős*, pages 161–176. Cambridge Univ. Press, Cambridge, 1990.
- K112. H. Kesten. Asymptotics in high dimensions for percolation. In *Disorder in physical systems*, Oxford Sci. Publ., pages 219–240. Oxford Univ. Press, New York, 1990.
- K113. H. Kesten. Upper bounds for the growth rate of DLA. *Phys. A*, 168(1):529–535, 1990.
- K114. H. Kesten and Y. Zhang. The probability of a large finite cluster in supercritical Bernoulli percolation. *Ann. Probab.*, 18(2):537–555, 1990.

1991

- K115. R. Durrett, H. Kesten, and G. Lawler. Making money from fair games. In *Random walks, Brownian motion, and interacting particle systems*, volume 28 of *Progr. Probab.*, pages 255–267. Birkhäuser, Boston, MA, 1991.
- K116. R. Durrett, H. Kesten, and E. Waymire. On weighted heights of random trees. *J. Theoret. Probab.*, 4(1):223–237, 1991.
- K117. R. Durrett and H. Kesten, editors. *Random walks, Brownian motion, and interacting particle systems*, volume 28 of *Progress in Probability*. Birkhäuser, Boston, MA, 1991. A Festschrift in honor of Frank Spitzer.
- K118. H. Kesten. Asymptotics in high dimensions for the Fortuin–Kasteleyn random cluster model. In *Spatial stochastic processes*, volume 19 of *Progr. Probab.*, pages 57–85. Birkhäuser, Boston, MA, 1991.
- K119. H. Kesten. Relations between solutions to a discrete and continuous Dirichlet problem. In *Random walks, Brownian motion, and interacting particle systems*, volume 28 of *Progr. Probab.*, pages 309–321. Birkhäuser, Boston, MA, 1991.
- K120. H. Kesten. Some caricatures of multiple contact diffusion-limited aggregation and the  $\eta$ -model. In *Stochastic analysis (Durham, 1990)*, volume 167 of *London Math. Soc. Lecture Note Ser.*, pages 179–227. Cambridge Univ. Press, Cambridge, 1991.

1992

- K121. H. Kesten. An absorption problem for several Brownian motions. In *Seminar on Stochastic Processes, 1991 (Los Angeles, CA, 1991)*, volume 29 of *Progr. Probab.*, pages 59–72. Birkhäuser, Boston, MA, 1992.
- K122. H. Kesten. Connectivity of certain graphs on halfspaces, quarter spaces, . . . In *Probability theory (Singapore, 1989)*, pages 91–104. De Gruyter, Berlin, 1992.
- K123. H. Kesten and G. F. Lawler. A necessary condition for making money from fair games. *Ann. Probab.*, 20(2):855–882, 1992.
- K124. H. Kesten and R. A. Maller. Ratios of trimmed sums and order statistics. *Ann. Probab.*, 20(4):1805–1842, 1992.

1993

- K125. C. E. Bezuidenhout, G. R. Grimmett, and H. Kesten. Strict inequality for critical values of Potts models and random-cluster processes. *Comm. Math. Phys.*, 158(1):1–16, 1993.
- K126. J. T. Cox, A. Gandolfi, P. S. Griffin, and H. Kesten. Greedy lattice animals. I. Upper bounds. *Ann. Appl. Probab.*, 3(4):1151–1169, 1993.
- K127. G. R. Grimmett, H. Kesten, and Y. Zhang. Random walk on the infinite cluster of the percolation model. *Probab. Theory Related Fields*, 96(1):33–44, 1993.
- K128. H. Kesten. Convergence in distribution of lightly trimmed and untrimmed sums are equivalent. *Math. Proc. Cambridge Philos. Soc.*, 113(3):615–638, 1993.
- K129. H. Kesten. Frank Spitzer's work on random walk and Brownian motion. *Ann. Probab.*, 21(2):593–607, 1993.
- K130. H. Kesten. On the speed of convergence in first-passage percolation. *Ann. Appl. Probab.*, 3(2):296–338, 1993.
- K131. H. Kesten and Y. Zhang. The tortuosity of occupied crossings of a box in critical percolation. *J. Statist. Phys.*, 70(3-4):599–611, 1993.

- K132. J. van den Berg and H. Kesten. Inequalities for the time constant in first-passage percolation. *Ann. Appl. Probab.*, 3(1):56–80, 1993.

1994

- K133. A. Gandolfi and H. Kesten. Greedy lattice animals. II. Linear growth. *Ann. Appl. Probab.*, 4(1):76–107, 1994.
- K134. H. Kesten. A limit theorem for weighted branching process trees. In *The Dynkin Festschrift*, volume 34 of *Progr. Probab.*, pages 153–166. Birkhäuser, Boston, MA, 1994.
- K135. H. Kesten and R. A. Maller. Infinite limits and infinite limit points of random walks and trimmed sums. *Ann. Probab.*, 22(3):1473–1513, 1994.

1995

- K136. I. Benjamini and H. Kesten. Percolation of arbitrary words in  $\{0, 1\}^{\mathbb{N}}$ . *Ann. Probab.*, 23(3):1024–1060, 1995.
- K137. P. A. Ferrari, H. Kesten, S. Martínez, and P. Picco. Existence of quasi-stationary distributions. A renewal dynamical approach. *Ann. Probab.*, 23(2):501–521, 1995.
- K138. H. Kesten. Branching random walk with a critical branching part. *J. Theoret. Probab.*, 8(4):921–962, 1995.
- K139. H. Kesten. A ratio limit theorem for (sub) Markov chains on  $\{1, 2, \dots\}$  with bounded jumps. *Adv. Appl. Probab.*, 27(3):652–691, 1995.
- K140. H. Kesten and R. A. Maller. The effect of trimming on the strong law of large numbers. *Proc. London Math. Soc.*, 71(2):441–480, 1995.
- K141. H. Kesten and R. H. Schonmann. On some growth models with a small parameter. *Probab. Theory Related Fields*, 101(4):435–468, 1995.

1996

- K142. I. Benjamini and H. Kesten. Distinguishing sceneries by observing the scenery along a random walk path. *J. Anal. Math.*, 69:97–135, 1996.
- K143. P. A. Ferrari, H. Kesten, and S. Martínez.  $R$ -positivity, quasi-stationary distributions and ratio limit theorems for a class of probabilistic automata. *Ann. Appl. Probab.*, 6(2):577–616, 1996.
- K144. H. Kesten. Detecting a single defect in a scenery by observing the scenery along a random walk path. In *Itô's stochastic calculus and probability theory*, pages 171–183. Springer, Tokyo, 1996.
- K145. H. Kesten. On the non-convexity of the time constant in first-passage percolation. *Electron. Comm. Probab.*, 1:paper 1, 6 pp., 1996.
- K146. H. Kesten and S. Lee. The central limit theorem for weighted minimal spanning trees on random points. *Ann. Appl. Probab.*, 6(2):495–527, 1996.
- K147. H. Kesten and R. A. Maller. Two renewal theorems for general random walks tending to infinity. *Probab. Theory Related Fields*, 106(1):1–38, 1996.
- K148. H. Kesten and B. Pittel. A local limit theorem for the number of nodes, the height, and the number of final leaves in a critical branching process tree. *Random Structures Algorithms*, 8(4):243–299, 1996.

1997

- K149. H. Kesten. A universal form of the Chung-type law of the iterated logarithm. *Ann. Probab.*, 25(4):1588–1620, 1997.



- K150. H. Kesten and R. A. Maller. Divergence of a random walk through deterministic and random subsequences. *J. Theoret. Probab.*, 10(2):395–427, 1997.
- K151. H. Kesten and R. A. Maller. Random deletion does not affect asymptotic normality or quadratic negligibility. *J. Multivariate Anal.*, 63(1):136–179, 1997.
- K152. H. Kesten and Y. Zhang. A central limit theorem for “critical” first-passage percolation in two dimensions. *Probab. Theory Related Fields*, 107(2):137–160, 1997.

1998

- K153. H. Kesten. Distinguishing and reconstructing sceneries from observations along random walk paths. In *Microsurveys in discrete probability (Princeton, NJ, 1997)*, volume 41 of *DIMACS Ser. Discrete Math. Theoret. Comput. Sci.*, pages 75–83. Amer. Math. Soc., Providence, RI, 1998.
- K154. H. Kesten and R. A. Maller. Random walks crossing high level curved boundaries. *J. Theoret. Probab.*, 11(4):1019–1074, 1998.
- K155. H. Kesten and R. A. Maller. Random walks crossing power law boundaries. *Studia Sci. Math. Hungar.*, 34(1-3):219–252, 1998.
- K156. H. Kesten, V. Sidoravicius, and Y. Zhang. Almost all words are seen in critical site percolation on the triangular lattice. *Electron. J. Probab.*, 3:paper 10, 75 pp., 1998.

1999

- K157. C. Borgs, J. T. Chayes, H. Kesten, and J. Spencer. Uniform boundedness of critical crossing probabilities implies hyperscaling. *Random Structures Algorithms*, 15(3-4):368–413, 1999.
- K158. H. Kesten and R. A. Maller. Stability and other limit laws for exit times of random walks from a strip or a halfplane. *Ann. Inst. H. Poincaré Probab. Statist.*, 35(6):685–734, 1999.

2000

- K159. H. Kesten. Coalescing and annihilating random walk with “action at a distance”. *J. Anal. Math.*, 80:183–256, 2000.
- K160. H. Kesten and Z. Su. Asymptotic behavior of the critical probability for  $\rho$ -percolation in high dimensions. *Probab. Theory Related Fields*, 117(3):419–447, 2000.
- K161. H. Kesten and Z. Su. Some remarks on  $AB$ -percolation in high dimensions. *J. Math. Phys.*, 41(3):1298–1320, 2000.
- K162. J. van den Berg and H. Kesten. Asymptotic density in a coalescing random walk model. *Ann. Probab.*, 28(1):303–352, 2000.

2001

- K163. C. Borgs, J. T. Chayes, H. Kesten, and J. Spencer. The birth of the infinite cluster: finite-size scaling in percolation. *Comm. Math. Phys.*, 224(1):153–204, 2001.
- K164. A. Dembo, A. Gandolfi, and H. Kesten. Greedy lattice animals: negative values and unconstrained maxima. *Ann. Probab.*, 29(1):205–241, 2001.
- K165. G. Grimmett and H. Kesten. Random electrical networks on complete graphs II: Proofs. 2001. <https://arxiv.org/abs/math/0107068>.

K166. Y. Hamana and H. Kesten. A large-deviation result for the range of random walk and for the Wiener sausage. *Probab. Theory Related Fields*, 120(2):183–208, 2001.

K167. H. Kesten, V. Sidoravicius, and Y. Zhang. Percolation of arbitrary words on the close-packed graph of  $\mathbb{Z}^2$ . *Electron. J. Probab.*, 6:paper 4, 27 pp., 2001.

2002

K168. R. Durrett, H. Kesten, and V. Limic. Once edge-reinforced random walk on a tree. *Probab. Theory Related Fields*, 122(4):567–592, 2002.

K169. Y. Hamana and H. Kesten. Large deviations for the range of an integer valued random walk. *Ann. Inst. H. Poincaré Probab. Statist.*, 38(1):17–58, 2002.

K170. H. Kesten. Some highlights of percolation. In *Proceedings of the International Congress of Mathematicians (Beijing)*, volume I, pages 345–362. Higher Ed. Press, Beijing, 2002.

K171. J. van den Berg and H. Kesten. Randomly coalescing random walk in dimension  $\geq 3$ . In *In and out of equilibrium (Mambucaba, 2000)*, volume 51 of *Progr. Probab.*, pages 1–45. Birkhäuser, Boston, MA, 2002.

2003

K172. H. Kesten. First-passage percolation. In *From classical to modern probability*, volume 54 of *Progr. Probab.*, pages 93–143. Birkhäuser, Basel, 2003.

K173. H. Kesten and V. Sidoravicius. Branching random walk with catalysts. *Electron. J. Probab.*, 8:paper 5, 51 pp., 2003.

2004

K174. I. Benjamini, H. Kesten, Y. Peres, and O. Schramm. Geometry of the uniform spanning forest: transitions in dimensions 4, 8, 12,  $\dots$ . *Ann. of Math. (2)*, 160(2):465–491, 2004. Reprinted in *Selected works of Oded Schramm*, Springer, 751–777, 2011.

K175. A. A. Járai and H. Kesten. A bound for the distribution of the hitting time of arbitrary sets by random walk. *Electron. Comm. Probab.*, 9:152–161, 2004.

K176. H. Kesten and R. Maller. Some effects of trimming on the law of the iterated logarithm. *J. Appl. Probab.*, 41A:253–271, 2004.

K177. H. Kesten, editor. *Probability on discrete structures*, volume 110 of *Encyclopaedia of Mathematical Sciences*. Springer-Verlag, Berlin, 2004.

2005

K178. H. Kesten and V. Sidoravicius. The spread of a rumor or infection in a moving population. *Ann. Probab.*, 33(6):2402–2462, 2005.

2006

K179. H. Kesten. What is  $\dots$  percolation? *Notices Amer. Math. Soc.*, 53(5):572–573, 2006.

K180. H. Kesten and V. Sidoravicius. A phase transition in a model for the spread of an infection. *Illinois J. Math.*, 50(1-4):547–634, 2006.

2007

K181. I. Benjamini, R. Izkovsky, and H. Kesten. On the range of the simple random walk bridge on groups. *Electron. J. Probab.*, 12:paper 20, 591–612, 2007.

- K182. A. M. Vershik, J. Bourgain, H. Kesten, and N. Reshetikhin. The mathematical work of the 2006 Fields medalists. *Notices Amer. Math. Soc.*, 54(3):388–404, 2007.

2008

- K183. H. Kesten and V. Sidoravicius. Positive recurrence of a one-dimensional variant of diffusion limited aggregation. In *In and out of equilibrium. 2*, volume 60 of *Progr. Probab.*, pages 429–461. Birkhäuser, Basel, 2008.
- K184. H. Kesten and V. Sidoravicius. A problem in one-dimensional diffusion-limited aggregation (DLA) and positive recurrence of Markov chains. *Ann. Probab.*, 36(5):1838–1879, 2008.
- K185. H. Kesten and V. Sidoravicius. A shape theorem for the spread of an infection. *Ann. of Math. (2)*, 167(3):701–766, 2008.

2010

- K186. H. Kesten. The work of Stanislav Smirnov. In *Proceedings of the International Congress of Mathematicians (Hyderabad)*, volume I, pages 73–84. Hindustan Book Agency, New Delhi, 2010.
- K187. H. Kesten and V. Sidoravicius. A problem in last-passage percolation. *Braz. J. Probab. Stat.*, 24(2):300–320, 2010.

2012

- K188. G. R. Grimmett and H. Kesten. Percolation since Saint-Flour. In *Percolation theory at Saint-Flour*, Probab. St.-Flour, pages ix–xxvii. Springer, Heidelberg, 2012.
- K189. G. R. Grimmett and H. Kesten. *Percolation theory at Saint-Flour*. Probability at Saint-Flour. Springer, Heidelberg, 2012.
- K190. H. Kesten, A. F. Ramírez, and V. Sidoravicius. Asymptotic shape and propagation of fronts for growth models in dynamic random environment. In *Probability in complex physical systems*, volume 11 of *Springer Proc. Math.*, pages 195–223. Springer, Heidelberg, 2012.
- K191. H. Kesten, V. Sidoravicius, and M. Vares. Oriented percolation in a random environment. 2012. <https://arxiv.org/abs/1207.3168>.

2014

- K192. F. den Hollander, H. Kesten, and V. Sidoravicius. Random walk in a high density dynamic random environment. *Indag. Math. (N.S.)*, 25(4):785–799, 2014.
- K193. H. Kesten, B. N. B. de Lima, V. Sidoravicius, and M. E. Vares. On the compatibility of binary sequences. *Comm. Pure Appl. Math.*, 67(6):871–905, 2014.

2016

- K194. I. Benjamini, E. Foxall, O. Gurel-Gurevich, M. Junge, and H. Kesten. Site recurrence for coalescing random walk. *Electron. Commun. Probab.*, 21:paper 47, 12 pp., 2016.

2020

- K195. H. Duminil-Copin, H. Kesten, F. Nazarov, Y. Peres, and V. Sidoravicius. On the number of maximal paths in directed last-passage percolation. *Ann. Probab.*, 48(5):2176–2188.